



<http://dx.doi.org/10.11646/zootaxa.3920.2.2>

<http://zoobank.org/urn:lsid:zoobank.org:pub:06B6ACB4-26BD-4816-9A8F-61039350785C>

Redescription and phylogenetic placement of the Hispaniolan spider genus *Lomaita* Bryant, 1948 (Araneae, Linyphiidae)

THIAGO DA SILVA-MOREIRA¹ & GUSTAVO HORMIGA²

Department of Biological Sciences, The George Washington University, Washington, D.C. 20052.

E-mail: ¹tmoreira@gwmail.gwu.edu; ²hormiga@gwu.edu

Abstract

The monotypic linyphiid genus *Lomaita* Bryant 1948 is redescribed. We present an updated description of the male of *L. darlingtoni*, the first description of the female and data on its natural history and distribution in the Dominican Republic. We provide a hypothesis on the phylogenetic placement of *Lomaita* based on cladistic analyses of morphological characters.

Key words: systematics, Linyphiinae, Neotropical fauna, taxonomy

Introduction

The monotypic spider genus *Lomaita* was erected in 1948 by Elizabeth Bryant to include *Lomaita darlingtoni*, a linyphiid species represented by a single male specimen from the Dominican Republic, placed by the author within Erigoninae. The specimen had been collected by Harvard coleopterist Philip J. Darlington in 1938, who had studied the fauna of the eastern part of the island for around three months, collecting in “a region of remote peaks, each seemingly with a fauna peculiar to itself” (Bryant, 1948).

The linyphiid fauna of Central America and the Caribbean remains very poorly studied, and only known from scattered faunistic works. The most comprehensive study on central American spiders is probably the 19th century monograph of Pickard-Cambridge, *Biologia Centrali-Americana* (Cambridge O.P., 1889–1904), where he described a great deal of Central-American and Mexican spider fauna. Although many of those taxonomic descriptions are quite outdated, this monumental work remains the only source of information for many species.

In this work we re-describe *Lomaita*, including the first description of the female of *L. darlingtoni*, and provide a phylogenetic placement of the genus based on a cladistic analysis of a morphological character matrix.

Material and methods

Specimens were examined and illustrated using a Leica DMRM compound microscope, and a Leica M 205A dissecting microscope, all fitted with camera lucida. Male palps and epigyna were examined using methyl salicylate as a temporary clearing agent (Holm 1979), then positioned for illustration on a temporary slide using the method described in Grandjean (1949) and Coddington (1983). Illustrations depict the left palp unless otherwise indicated.

Digital images were produced with a Leica DFC 425 camera mounted on a Leica M 205A dissecting microscope. Images were acquired using Leica Application Suite (LAS v3.7) that produces stacks of different depths (35 to 60 images per stack). The multifocus stacks were assembled into a single image using Helicon Focus (version 5.3).

All measurements are in millimeters. The scale bars on the drawings were taken using a stage micrometer in the dissecting microscope, while the bars in the digital photos were acquired by the LAS software. In most cases,

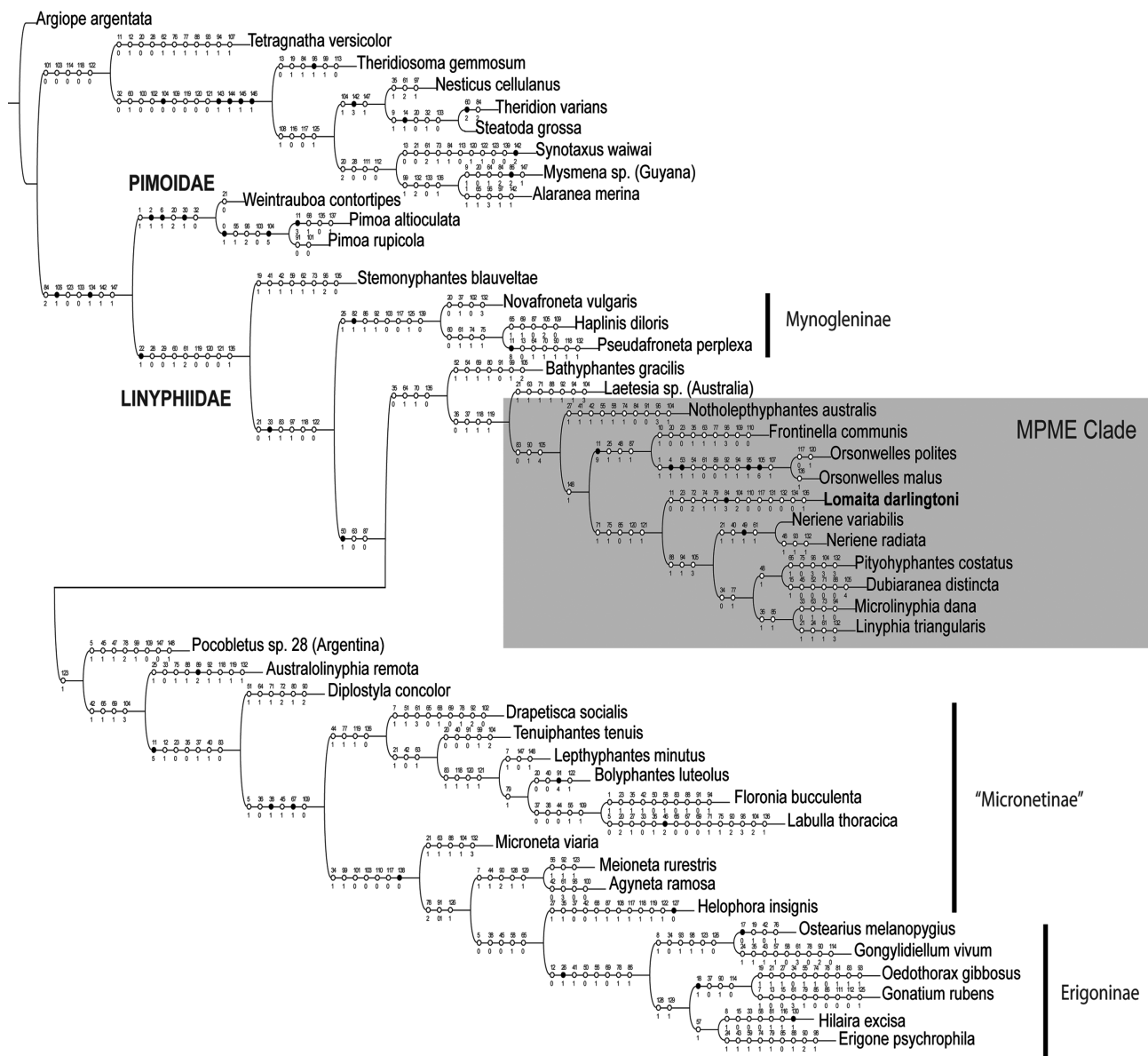


FIGURE 10. Implied weights tree ($k = 21$; fit = 18.24193) with the morphological characters and state changes mapped. Closed circles indicate synapomorphies, open circles show homoplastic changes.

Acknowledgments

We would like to thank Fernando Álvarez-Padilla (UNAM) for kindly making available to us the web photographs of *Lomaita darlingtoni*, and to Gonzalo Giribet (MCZ) and Jonathan Coddington (USNM) for specimen loans. Peter van Helsdingen, Efrat Gavish-Regev and Martín Ramírez made useful comments on an earlier version of this manuscript. This research was supported by US NSF grants DEB 1144492 and DEB 114417 (to GH and Gonzalo Giribet). Fieldwork in the Dominican Republic was made possible by NSF grant EAR-0228699 to GH and by a REF grant from The George Washington University.

References

- Alvarez-Padilla, F. & Hormiga, G. (2007) A protocol for digesting internal soft tissues and mounting spiders for scanning electron microscopy. *The Journal of Arachnology*, 35, 538–542.
<http://dx.doi.org/10.1636/Sh06-55.1>

- Arnedo, M.A., Hormiga, G. & Scharff, N. (2009) Higher-level phylogenetics of linyphiid spiders (Araneae, Linyphiidae) based on morphological and molecular evidence. *Cladistics*, 25, 231–262.
<http://dx.doi.org/10.1111/j.1096-0031.2009.00249.x>
- Brignoli, P.M. (1983) *A catalogue of the Araneae described between 1940 and 1981*. Manchester University Press, Manchester, 755 pp.
- Bryant, E.B. (1948) The spiders of Hispaniola. *Bulletin of the Museum of Comparative Zoology Harvard*, 100, 331–459.
- Cambridge, O.P. (1889–1902) Arachnida. Araneida. *Biologia Centrali-Americana, Zoology*, 2, 89–192.
- Coddington, J.A. (1983) A Temporary Slide Mount Allowing Precise Manipulation of Small Structures. In: Kraus, O. (Ed.), Taxonomy, Biology, and Ecology of Araneae and Myriapoda. *Verhandlungen des Naturwissenschaftlichen Vereins in Hamburg, New Series*, 26, pp. 291–292.
- Coddington, J.A. (1990) Cladistics and spider classification: Araneomorph phylogeny and the monophyly of orbweavers (Araneae: Araneomorphae; Orbiculariae). *Acta Zoologica Fennica*, 190, 75–87.
- Denis J. (1949) Notes sur les érigonides. XVI. Essai sur la détermination des femelles d'érigonides. *Bulletin de la Société d'Histoire Naturelle de Toulouse*, 83, 129–158.
- Fitch, W.M. (1971) Toward defining the course of evolution: minimum change for a specific tree topology. *Systematic Zoology*, 20, 404–416.
<http://dx.doi.org/10.2307/2412116>
- Goloboff, P.A. & Farris, J.S. (2001) Methods for Quick Consensus Estimation. *Cladistics*, 17, S26–S34.
<http://dx.doi.org/10.1111/j.1096-0031.2001.tb00102.x>
- Goloboff, P.A., Farris, J.S. & Nixon, K.C. (2003a) T.N.T.: Tree Analysis Using New Technology. Program and documentation. Available from: <http://www.zmuc.dk/public/phylogeny/tnt> (accessed 20 January 2015)
- Goloboff, P.A., Farris, J.S., Källersjö, M., Oxelman, B., Ramirez, M.J. & Szumik, C.A. (2003b) Improvements to resampling measures of group support. *Cladistics*, 19, 324–332.
[http://dx.doi.org/10.1016/S0748-3007\(03\)00060-4](http://dx.doi.org/10.1016/S0748-3007(03)00060-4)
- Grandjean, F. (1949) Observation et conservation des très petit arthropodes. *Bulletin du Muséum National d'Histoire Naturelle Paris*, 21, 363–370.
- Griswold, C.E., Coddington, J.A., Hormiga, G. & Scharff, N. (1998) Phylogeny of the orb-web building spiders (Araneae, Orbiculariae: Deinopoidea, Araneoidea). *Zoological Journal of the Linnean Society*, 123, 1–99.
<http://dx.doi.org/10.1111/j.1096-3642.1998.tb01290.x>
- Holm, A. (1979) A taxonomic study of European and East African species of the genera *Pelecopsis* and *Trichopterna* (Araneae, Linyphiidae), with descriptions of a new genus and two new species of *Pelecopsis* from Kenya. *Zoologica Scripta*, 8, 255–278.
<http://dx.doi.org/10.1111/j.1463-6409.1979.tb00638.x>
- Hormiga, G. (1994) Cladistics and the comparative morphology of linyphiid spiders and their relatives (Araneae, Araneoidea, Linyphiidae). *Zoological Journal of the Linnean Society*, 111, 1–71.
<http://dx.doi.org/10.1111/j.1096-3642.1994.tb01491.x>
- Hormiga, G. (2002) *Orsomvelles*, a new genus of giant linyphiid spiders (Araneae) from the Hawaiian Islands. *Invertebrate Systematics*, 16, 369–448.
<http://dx.doi.org/10.1071/IT01026>
- Hormiga, G. & Scharff, N. (2005) Monophyly and phylogenetic placement of the spider genus *Labulla* Simon, 1884 (Araneae, Linyphiidae) and description of the new genus *Pecado*. *Zoological Journal of the Linnean Society*, 143, 359–404.
<http://dx.doi.org/10.1111/j.1096-3642.2005.00147.x>
- Maddison, W.P. & Maddison, D.R. (2007) *Mesquite: a modular system for evolutionary analysis*. Version 2.0. Available from: <http://mesquiteproject.org> (accessed 15 October 2014)
- Miller, J.A. (2007) Review of Erigonine spider genera in the Neotropics (Araneae: Linyphiidae, Erigoninae). *Zoological Journal of The Linnean Society*, 149 (S1), 1–263.
<http://dx.doi.org/10.1111/j.1096-3642.2007.00233.x>
- Miller, J.A. & Hormiga, G. (2004) Clade stability and the addition of data – a case study from erigonine spiders (Araneae: Linyphiidae, Erigoninae). *Cladistics*, 20, 385–442.
<http://dx.doi.org/10.1111/j.1096-0031.2004.00033.x>
- Millidge, A.F. (1993) Further remarks on the taxonomy and relationships of the Linyphiidae, based on the epigynal duct conformation and other characters (Araneae). *Bulletin of the British Arachnological Society*, 9, 145–156.
- Nixon, K.C. (1999) The parsimony ratchet, a new method for rapid parsimony analysis. *Cladistics*, 15, 407–414.
<http://dx.doi.org/10.1111/j.1096-0031.1999.tb00277.x>
- Nixon, K.C. (2002) Winclada, Version 1.00.08. Program and documentation. Published by the author, Ithaca, NY, USA. Available from: <http://www.cladistics.com> (accessed 20 January 2015)
- Penney, D. (2008) *Dominican amber spiders: A comparative palaeontological-neontological approach to identification, faunistics, ecology and biogeography*. Siri Scientific Press, Manchester, 176 pp.
- Petrunkovitch, A. (1911) A synonymic index-catalogue of spiders of North, Central and South America with all adjacent islands, Greenland, Bermuda, West Indies, Terra del Fuego, Galapagos, etc. *Bulletin of the American Museum Natural History*, 29, 1–791