



<http://dx.doi.org/10.11646/zootaxa.3640.3.11>

<http://zoobank.org/urn:lsid:zoobank.org:pub:6EE4D3D0-575C-44DD-BE81-C1112F20730C>

Comments on ‘The valid generic names for the fish species usually placed in *Cyclocheilichthys*’ (KOTTELAT 2013) and a correction of Pasco-viel *et al.* (2012)

EMMANUEL PASCO-VIEL^{1,3}, MONETTE VERAN² & LAURENT VIRIOT¹

¹Team “Evo-Devo of Vertebrate Dentition,” Institut de Génomique Fonctionnelle de Lyon, Université de Lyon, Unité Mixte de Recherche 5242, Centre National de la Recherche Scientifique, Université Claude Bernard de Lyon 1, Ecole Normale Supérieure de Lyon, 69364 Lyon Cedex 07, France

²Muséum National d’Histoire Naturelle, Centre de Recherches sur la Paléobiodiversité et les Paléoenvironnements (CRP2), UMR 7207, Département Histoire de la Terre, 8 rue Buffon, CP 38, Paris cedex 05, France

³Corresponding author: E-mail: emmanuel.pasco@ens-lyon.fr

As authors of the study demonstrating the non-monophyly of the genus previously called *Cyclocheilichthys* (Pasco-Viel *et al.* 2012), which included nine species, we acknowledge Kottelat’s (2013: this issue) conclusions with regard to the generic names for the species we investigated:

Cyclocheilos for *C. enoplos*; *Cyclocheilichthys* for *C. armatus*, *C. apogon* and *C. repasson*.

With regard to the other species previously included in *Cyclocheilichthys*, as already mentioned in our study, we believe *C. furcatus* should be assigned to *Cyclocheilos* given its similarity with *C. enoplos*. With regard to *C. janthochir*, the anatomical investigation of a specimen from the British Museum of Natural History (BMNH 1866.5.2.145) shows that, as for *C. armatus*, the neural complex (ne.comp) is not bound to the supraoccipital crest (soc.cr) and the most posterior supraneural (Sne) is not bound to the first pterygiophore (Ptery I)—see Fig.1. Moreover, its phylogenetic position as determined in Yang *et al.* (2012) shows that *C. janthochir* is closer to *C. armatus* than to *C. enoplos*. Consequently, we agree with Kottelat’s (2013) opinion that it should be retained in *Cyclocheilichthys*

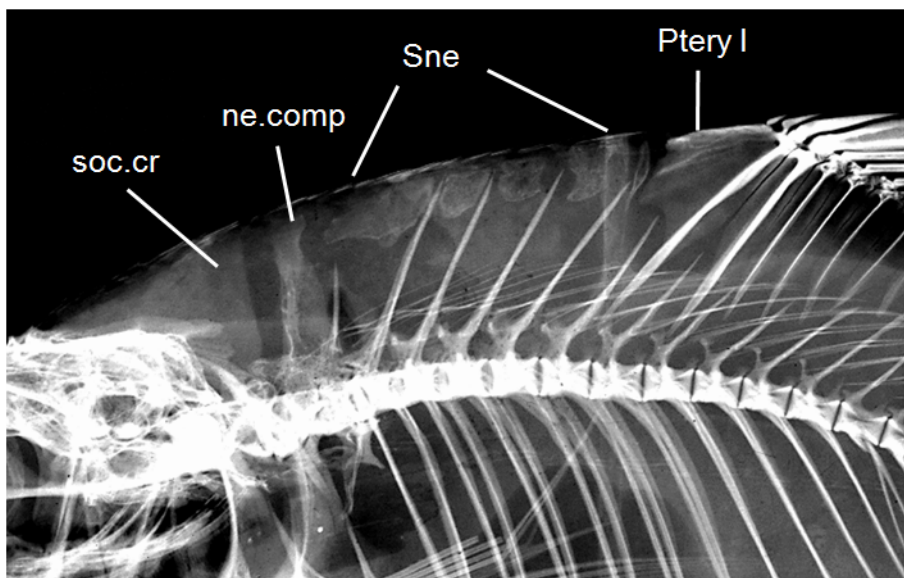


FIGURE 1. Radiograph in lateral view of the anterior part of the postcranial skeleton of *Cyclocheilichthys janthochir* (BMNH 1866.5.2.145).