



Erratum: Convolutidae (Acoela) from Tanzania by Achatz & Hooge (2006)

Due to a failure in the transmission of electronic files, the line drawings in Achatz & Hooge (2006) were printed in an inappropriate layout. They are properly published herein.

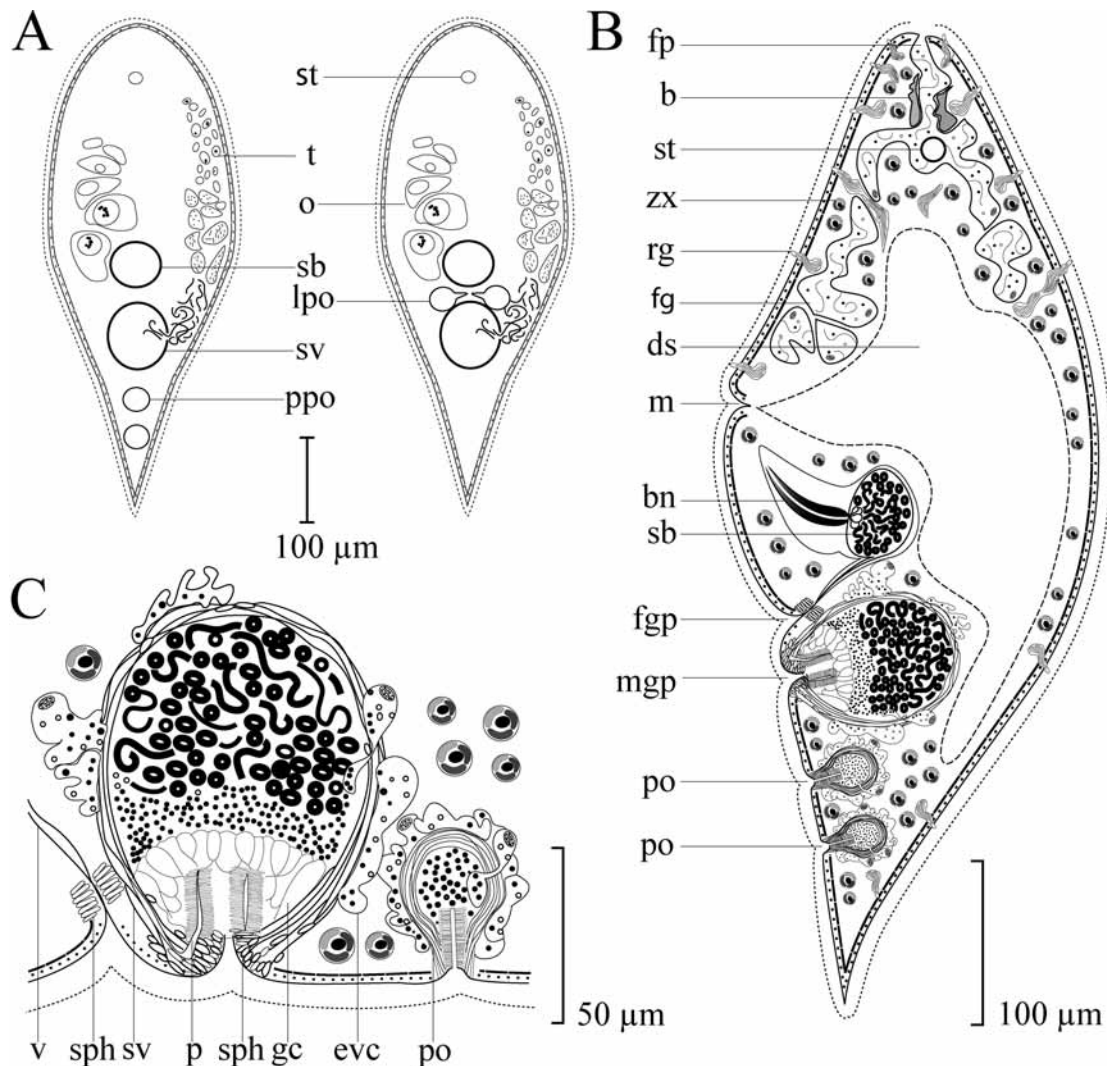


FIGURE 5. *Convoluta thela* (Antonius, 1968); reconstructions to show arrangement of organs. A. Dorsal view showing the two most abundant distributions of prostatic organs. The gonads are paired but for clarity just the right testes and left ovaries are shown. B. Sagittal reconstruction of whole specimen. C. Sagittal reconstruction of male copulatory organ and prostatic organ. Insunk nuclei of the epidermis are not illustrated.

JOHANNES G. ACHATZ & MATTHEW D. HOOGE

Department of Biological Sciences, The University of Maine, 5751 Murray Hall, Orono, ME, 04469-5751, USA.

References

- Achatz, J.G. & Hooge, M.D. (2006) Convolutidae from Tanzania. *Zootaxa*, 1362, 1–21.
 Antonius, A. (1968) Faunistische Studien am Roten Meer im Winter 1961/62, Teil IV. Neue Convolutidae und eine Bearbeitung des Verwandtschaftskreises Convoluta (Turbellaria Acoela). *Zoologisches Jahrbuch Systematik*, 95, 297–394.
 Haswell, W.A. (1905) Studies on the Turbellaria, Part I. *Quarterly Journal Microscopical Science*, 49, 425–467.