



***Mitinha* and *Tamanduamyia*, two new genera of Mythicomyiinae (Diptera, Mythicomyiidae) from northeast Brazil**

J.A. RAFAEL¹ & F. LIMEIRA-DE-OLIVEIRA²

¹Instituto Nacional de Pesquisas da Amazônia, INPA, Coordenação de Biodiversidade, Caixa Postal 2223, 69080–971 Manaus, Amazonas, Brazil. E-mail: jarafael@inpa.gov.br

²Universidade Estadual do Maranhão, Laboratório de Estudos dos Invertebrados, 65604–380, Caxias, Maranhão, Brazil. E-mail: f.limeira-de-oliveira@hotmail.com

Abstract

Two new genera and two new species of Mythicomyiinae are described based on material collected in Parque Nacional Serra das Confusões, Piauí state, northeast Brazil, an arid region: *Mitinha*, **gen. nov.**, type-species *M. neri*, **sp. nov.** and *Tamanduamyia*, **gen. nov.**, type-species *T. bandeira*, **sp. nov.** An illustrated key is presented for world Mythicomyiinae genera.

Key words: Mythicomyiidae, *Mitinha*, *Tamanduamyia*, taxonomy

Introduction

Previous to this study, only one species of Mythicomyiidae (Diptera) was recorded from Brazil (Evenhuis 2002b), *Pieza kake* Evenhuis (Evenhuis 2002a) from Minas Gerais. The Diptera project number 472.158/2012-0, with CNPq financial funds, has resulted in a large collection of flies from the arid Caatinga vegetation, in Parque Nacional Serra das Confusões, Piauí. The Caatinga biome falls entirely in northeast Brazil and it is typified by a long dry season and irregular rainfall. It has xeric vegetation, which has a bushy aspect, its plants having small leaves or thorns. Cacti, thick-stemmed plants, thorny brush, and arid-adapted grasses make up the ground layer. Some species undergo loss of leaves in the dry season, while some others, like bromeliaceae and cacti, can store water.

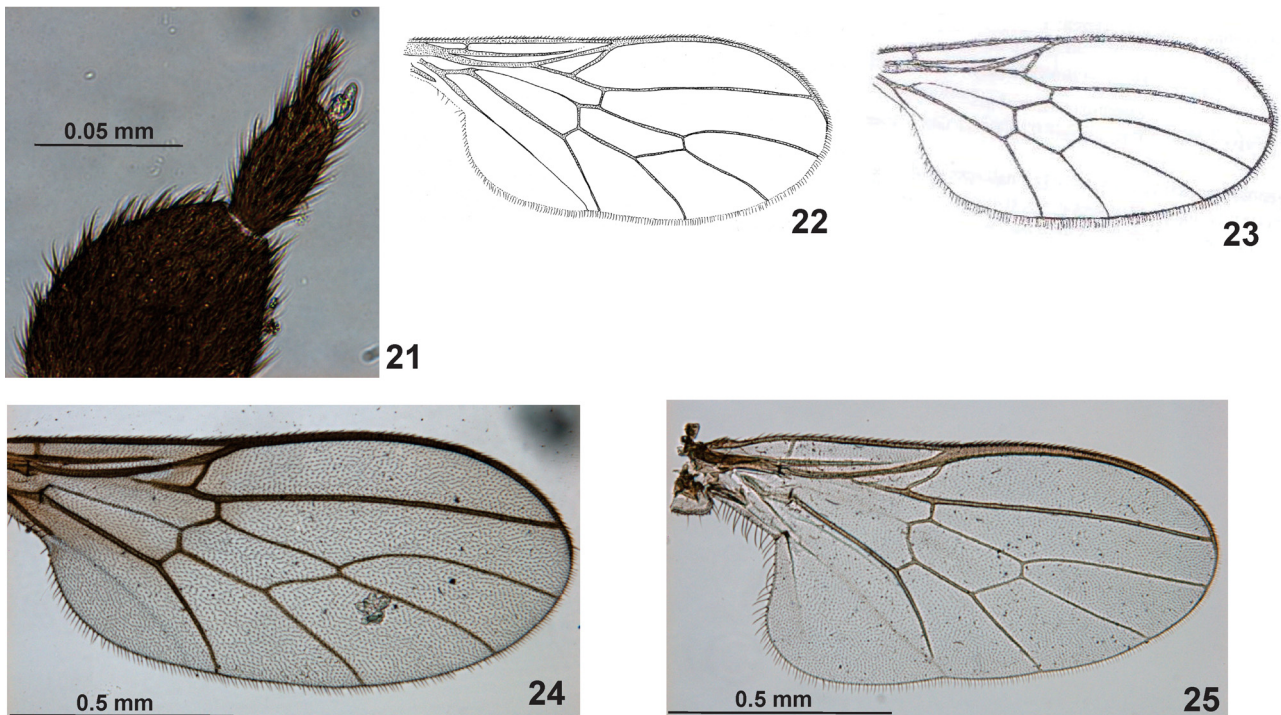
The insect collections that are being conducted in this biome have revealed a high richness. A high number of mythicomyiid specimens, more than two hundred, have been collected representing different genera. Two of these genera are new and are described here. Work treating the remaining collected specimens of *Pieza* Evenhuis, *Glbellula* Bezzi and *Mythicomyia* (*Heterhybos*) Brèthes is forthcoming.

Material and methods

This study is based on the examination of specimens housed in the Coleção Zoológica do Maranhão (CZMA), Caxias, Maranhão. Specimens examined in this study will additionally be deposited in the following collections: INPA = Instituto Nacional de Pesquisas da Amazônia, Manaus, Amazonas, Brazil; BPBM = Bishop Museum, Honolulu, Hawaii, USA; MNRJ = Museu Nacional do Rio de Janeiro, Rio de Janeiro, Brazil and MZSP = Museu de Zoologia da Universidade de São Paulo, São Paulo, Brazil.

The descriptions were based mainly on dried specimens, but some characters were also based on alcohol preserved specimens. The description was made using a Leica M125 stereoscopic microscope with an incident white-light source. The description was based on the holotype and paratype specimens, and that of the opposite sex was based on paratypes. The specimens length was based on the straight distance measured from the frons at

- 7 Wing with cell dm open, distal veins faint or effaced; head as wide as or wider than thorax *Nexus* Hall & Evenhuis
 - Wing with cell dm complete (Fig. 22); distal veins not faint; head usually narrower than thorax *Pieza* Evenhuis



FIGURES 21–25. Mythicomyiidae. **21.** Antennae of *Pieza*, from Piauí, Brazil; **22.** Wing of *Mythenteles*, from Evenhuis (2002a); **23.** Wing of *Reissa*, from Greathead & Evenhuis (2001); **24.** Wing of *Pieza*, from Piauí, Brazil; **25.** Wing of *Mythicomyia*, from Piauí, Brazil.

Acknowledgements

We thank the Conselho Nacional de Desenvolvimento Científico e Tecnológico (CNPq) for the award of a fellowship to J.A.R. (grant 300305/2007–9), for financial support (Proc. 472.158/2012-0). Fundação de Amparo à Pesquisa do Estado do Amazonas (FAPEAM) also provided financial support to the Project. To Dr Neal Evenhuis for comments, corrections and incentives while the work was being done. To Dr Christine Lambkin and one anonymous reviewer provided comments and corrections on an earlier draft. To Fundação de Amparo à Pesquisa e ao Desenvolvimento Científico e Tecnológico do Maranhão (FAPEMA) by financial support (grant CEBIOMA 0300112/2012). To ICMBio by the licence to work in the Parque Nacional Serra das Confusões. To the students from UEMA Juarez da Silva Pinto Júnior, Surama Pereira, Thiara Lopes Rocha, Tito Tomiston Andrade Silva and from INPA, Jéssica Luna Camico, for the support collecting, sorting and photographing the material.

References

- Cumming, J.M. & Wood, D.M. (2009) Morphology and terminology. In: Brown, B.V., Borkent, A., Cumming, J.M., Wood, D.M., Woodley, N.E. & Zumbado, M.A. (Eds.), *Manual of Central American Diptera. Vol. 1*. NRC Research Press, Ottawa, Ontario, Canada, pp. 9–50.
- Evenhuis, N.L. (2002a) *Pieza*, a new genus of microbombyliids from the New World (Diptera: Mythicomyiidae). *Zootaxa*, 36, 1–28.
- Evenhuis, N.L. (2002b) Catalog of the Mythicomyiidae of the World (Insecta: Diptera). *Bishop Museum Bulletin in Entomology*, 10, 1–85.
- Greathead, D.J. & Evenhuis, N.L. (2001) Annotated keys to the genera of African Bombylioidea (Diptera: Bombyliidae; Mythicomyiidae). *African Invertebrates*, 42, 105–224.
- Yeates, D.K. (1994) The cladistics and classification of the Bombyliidae (Diptera: Asiloidea). *Bulletin of the American Museum of Natural History*, 219, 1–199.