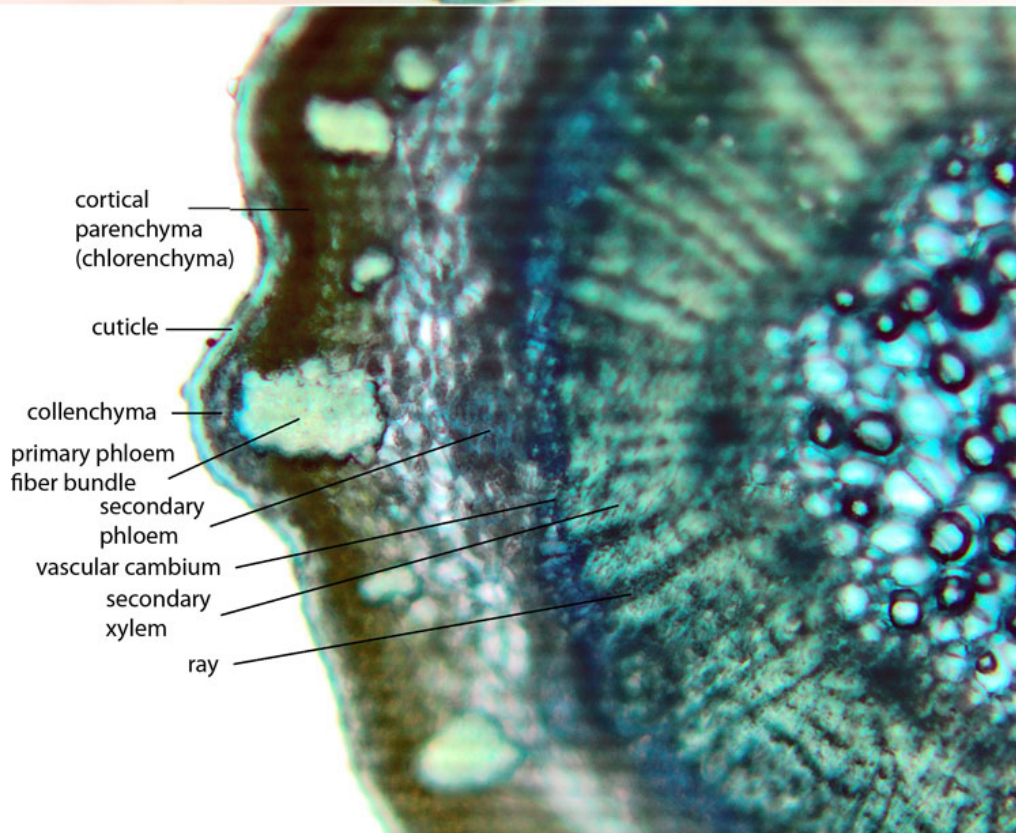
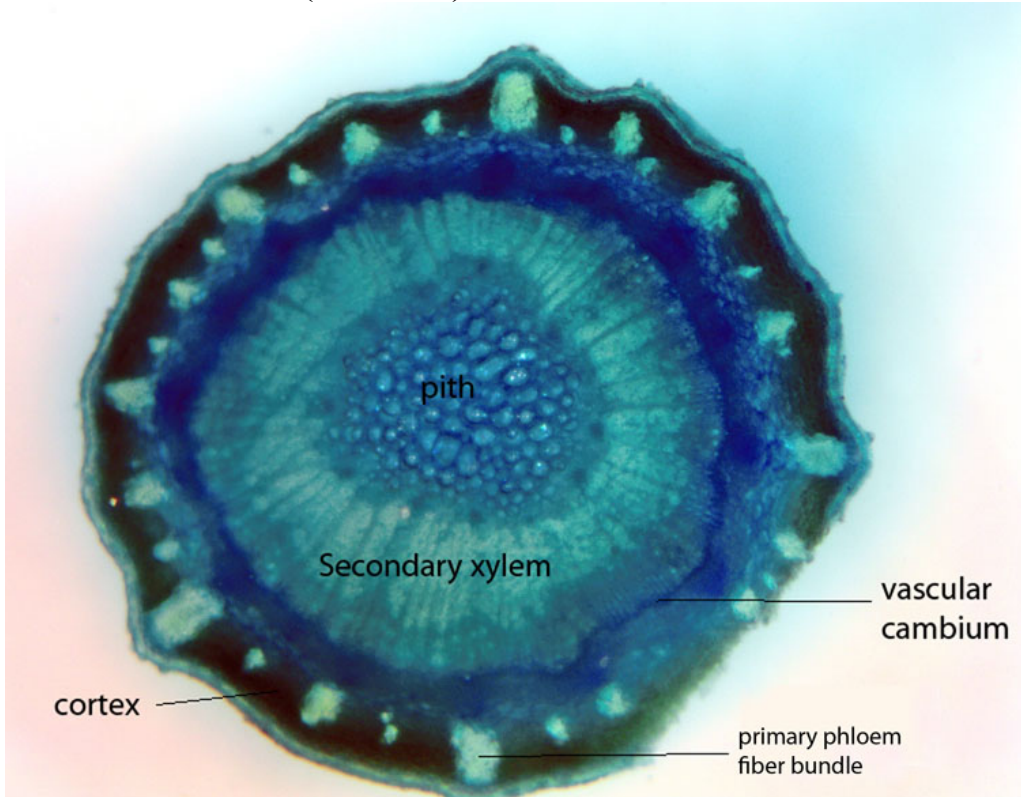
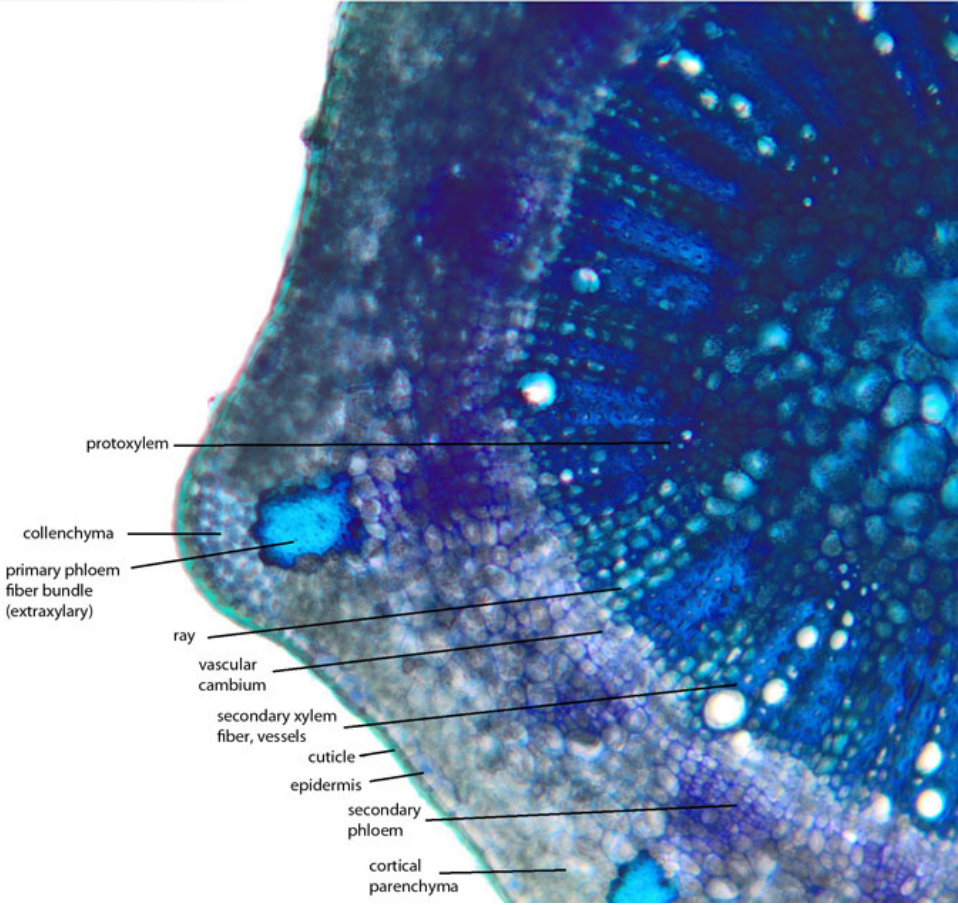
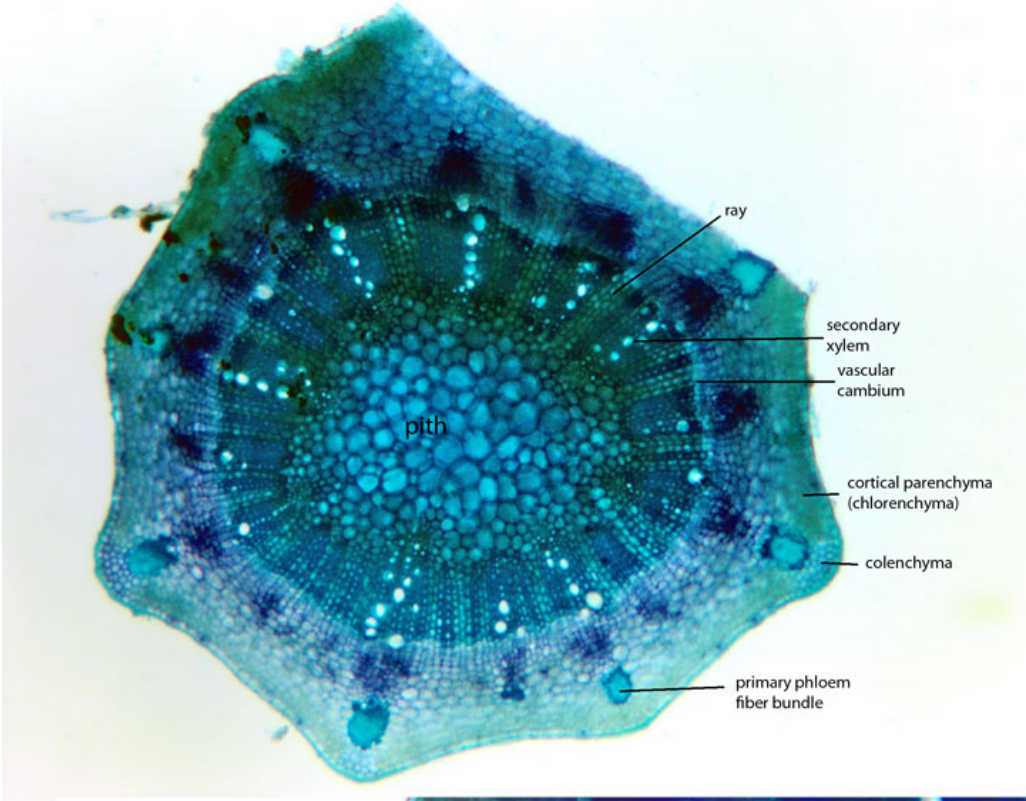


Supplementary File S2
Stem sections of various Thesiaceae

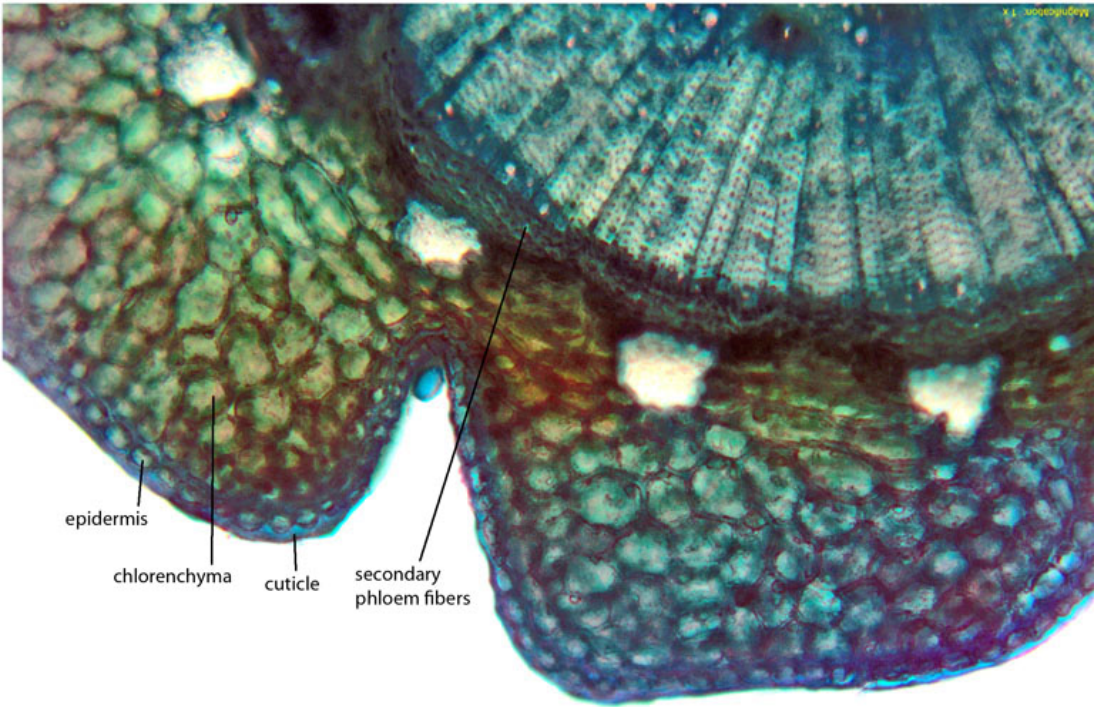
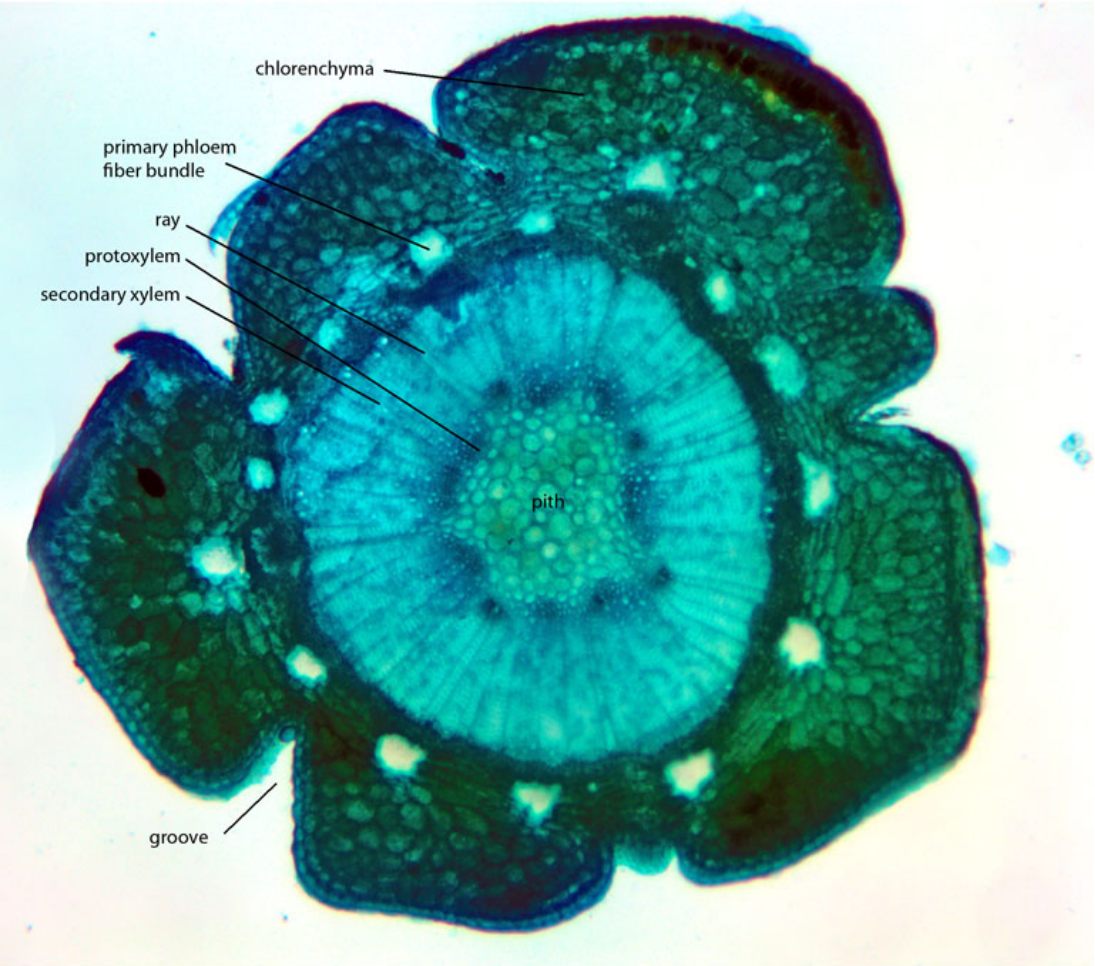
Lacomucinaea lineata (DLN 4088)



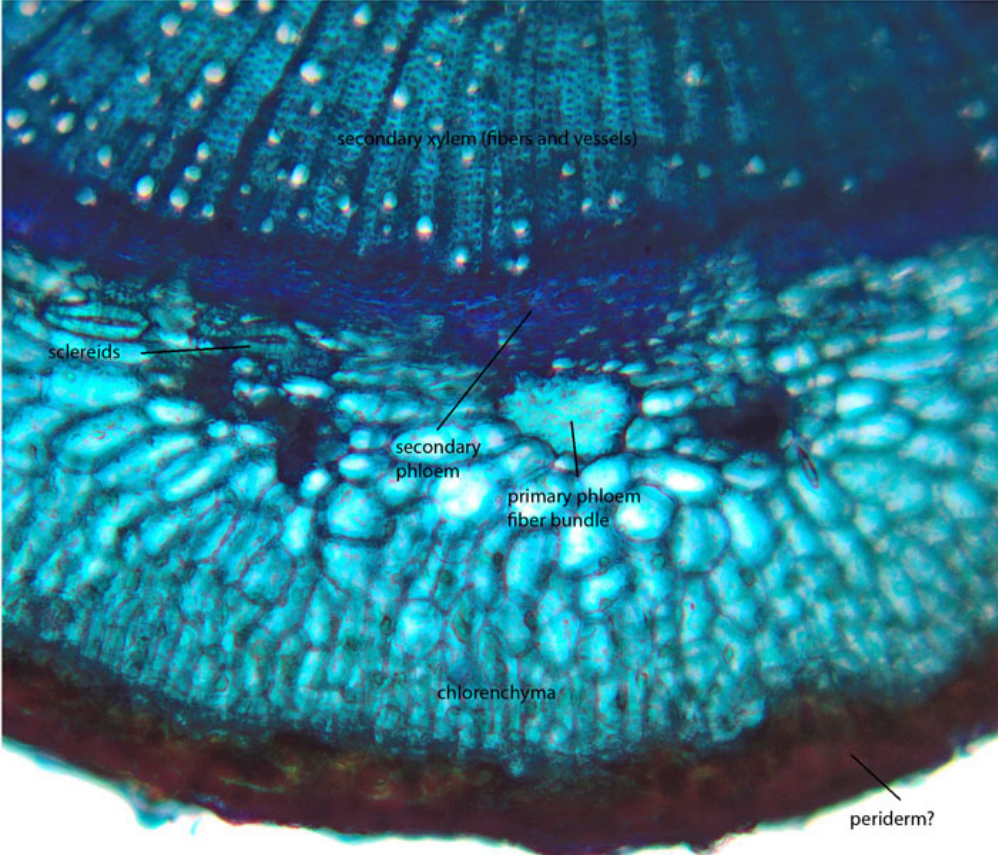
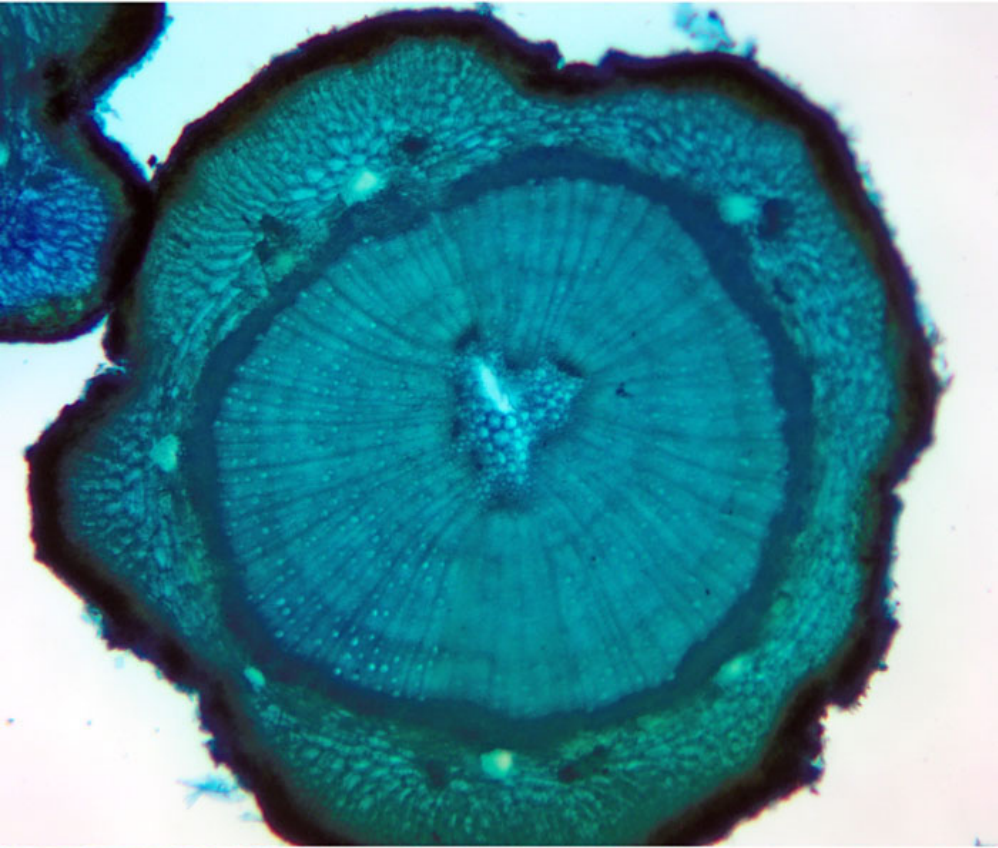
Osyridicarpos schimperianus (DLN 4110)



Thesium carinatum (DLN 4094)



Thesium cf. frisea (DLN 4105)



secondary xylem (fibers and vessels)

sclereids

secondary phloem

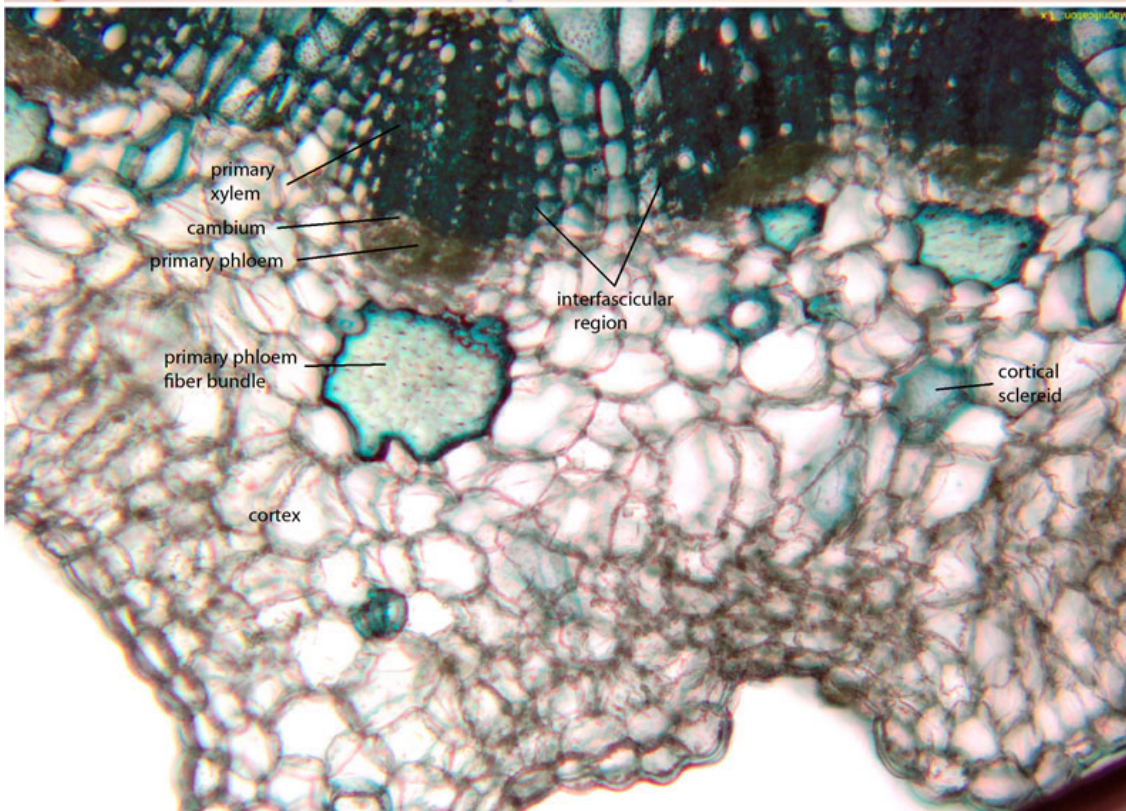
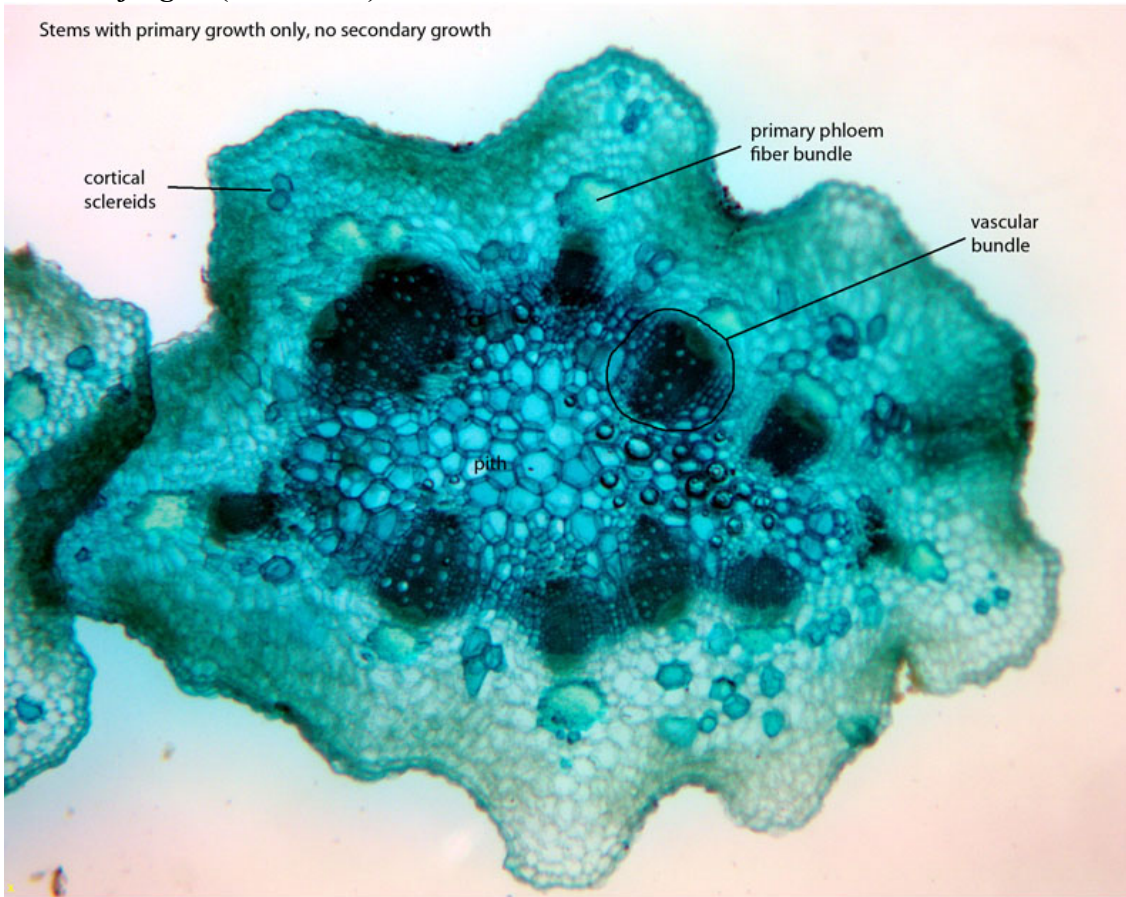
primary phloem fiber bundle

chlorenchyma

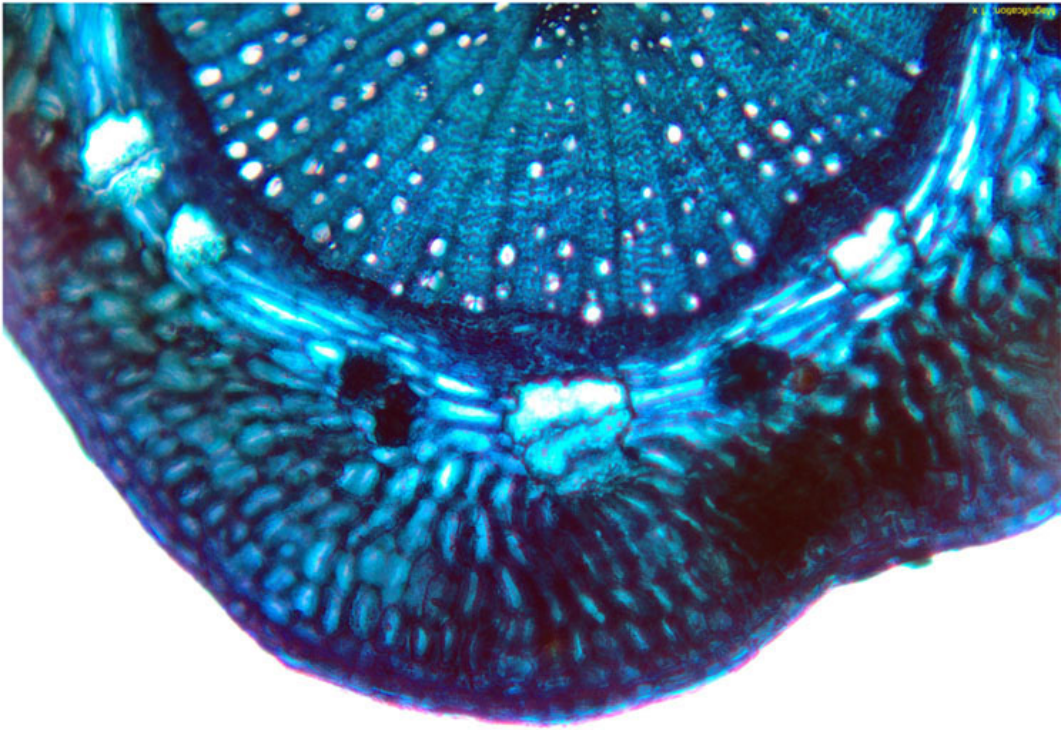
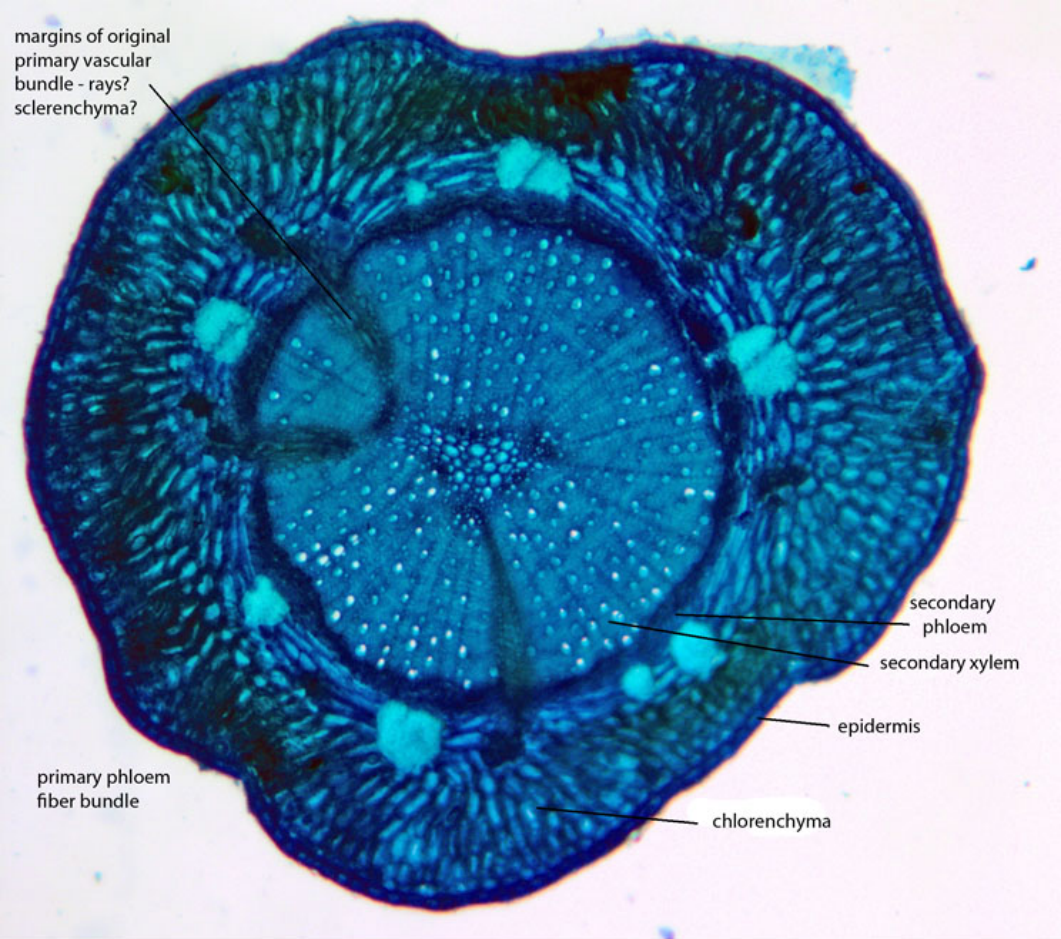
periderm?

Thesium fragile (DLN 4102)

Stems with primary growth only, no secondary growth

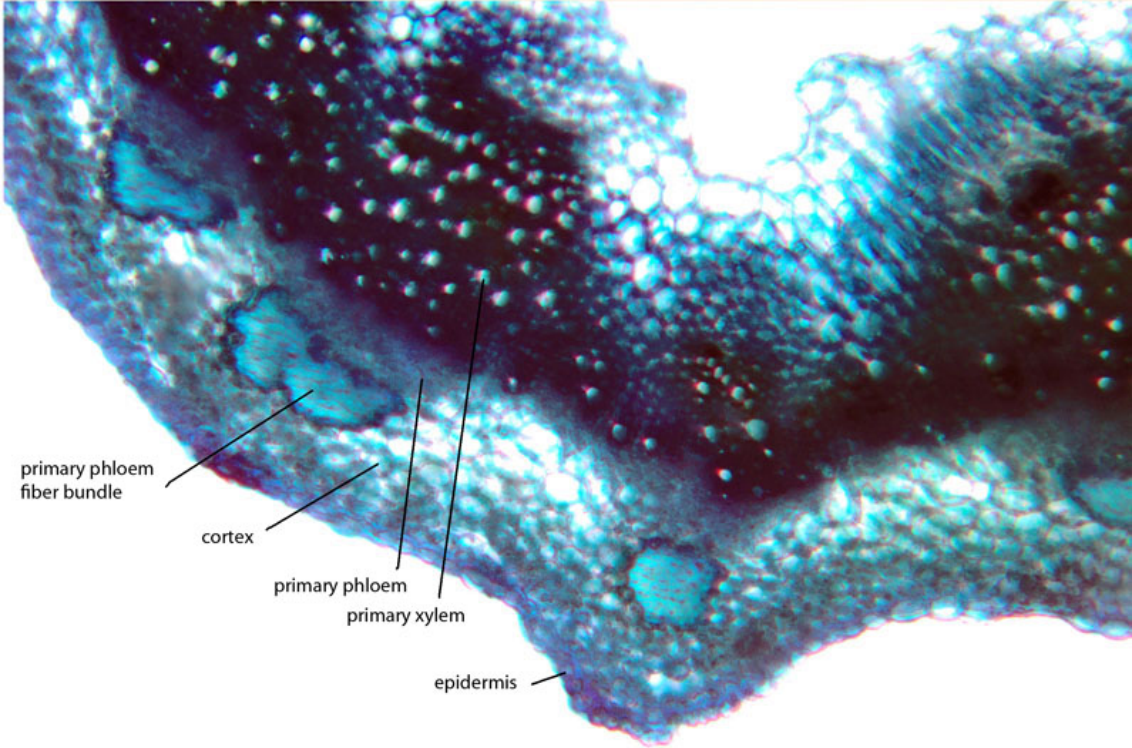
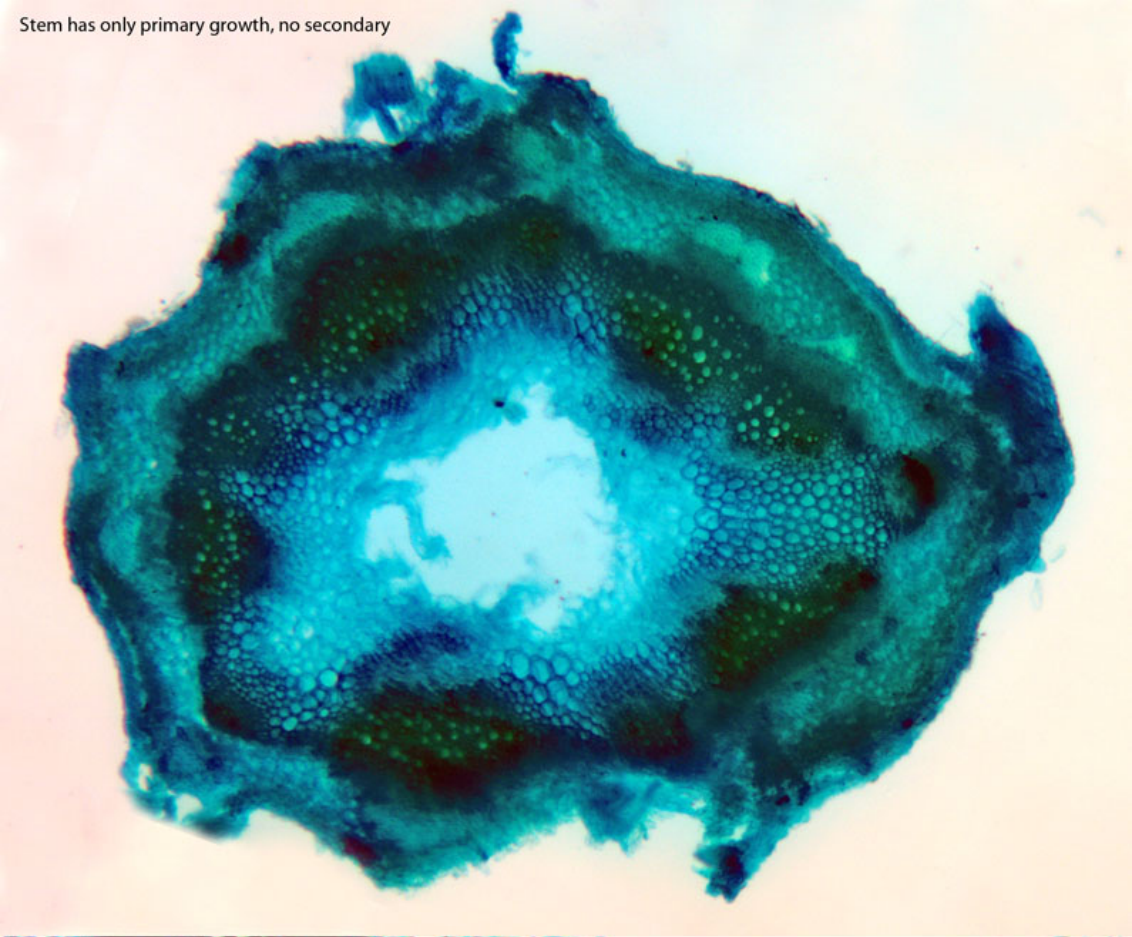


Thesium nudicaule (DLN 4098)

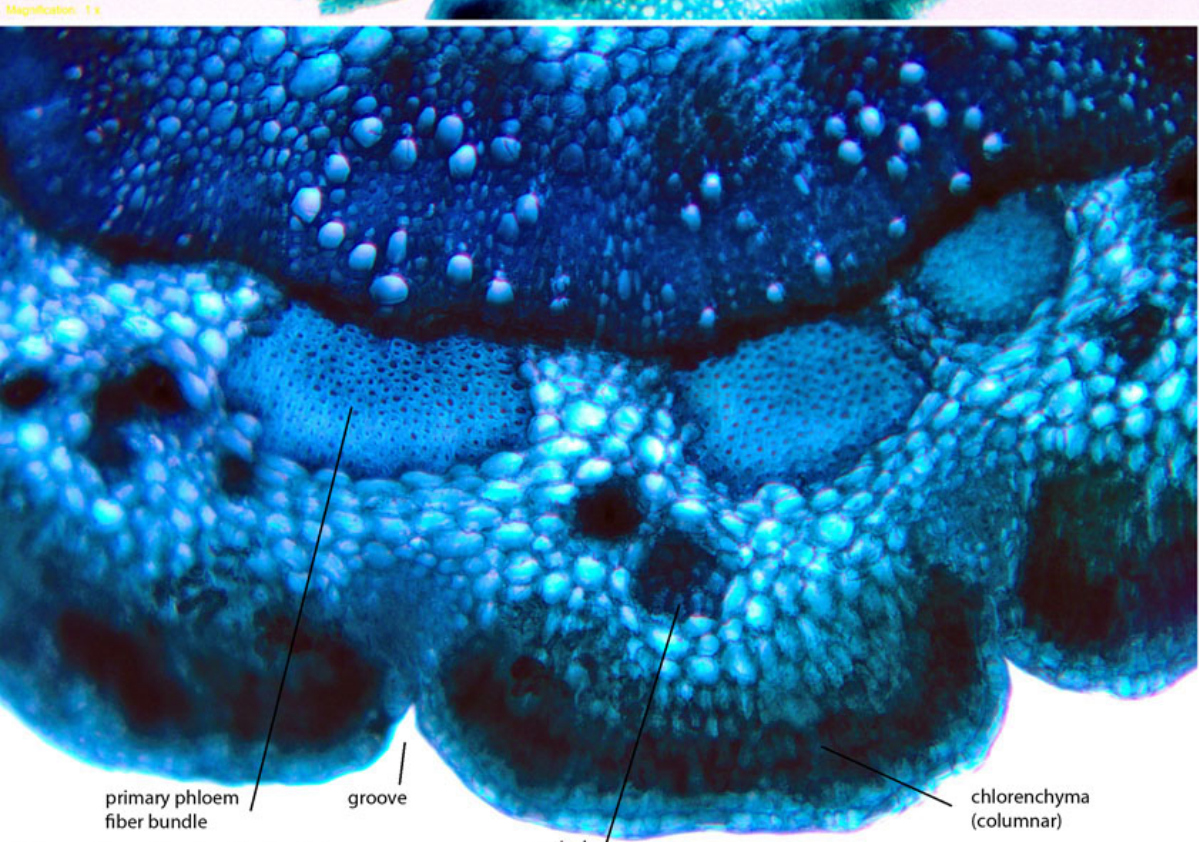
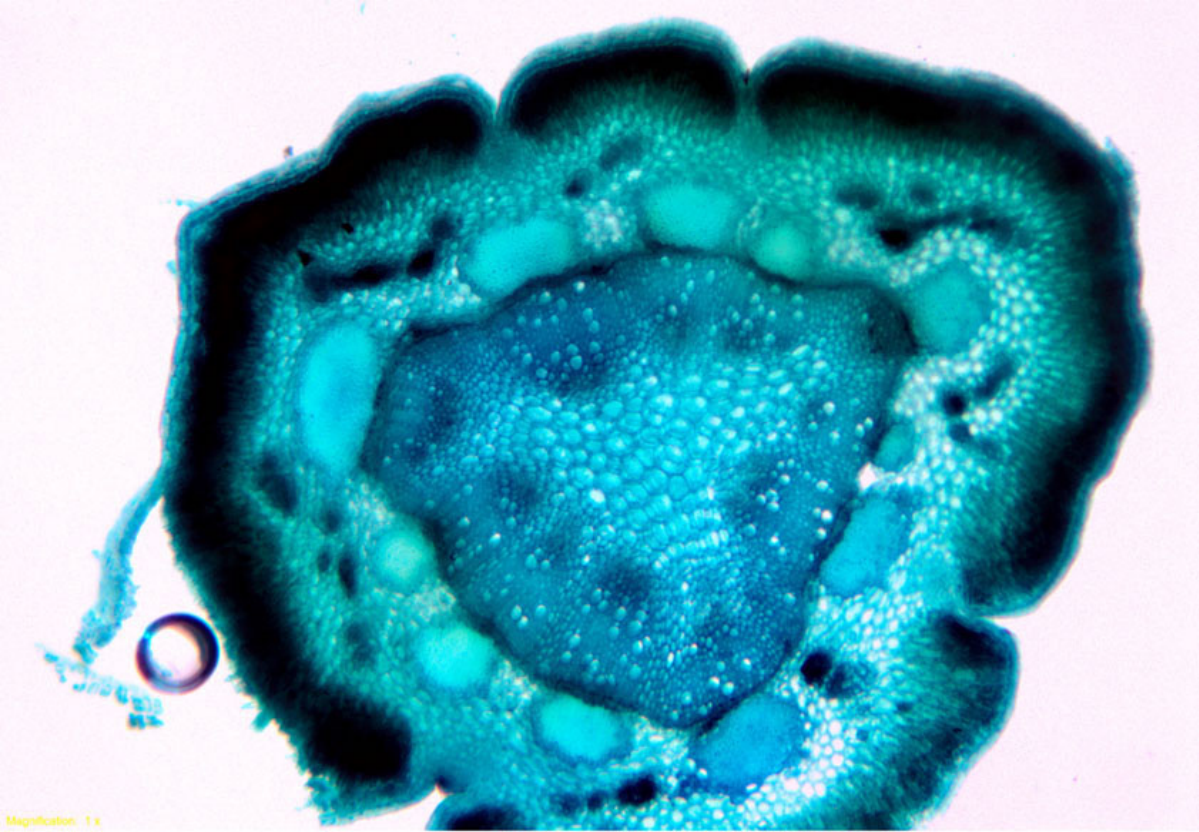


***Thesium ramosum* (DLN 5558)**

Stem has only primary growth, no secondary



Thesium strictum (DLN 4093)



primary phloem fiber bundle

groove

cortical sclereids

chlorenchyma (columnar)

Primary phloem fiber bundle sits right up against the phloem and cambium

Thesium spicatum (DLN 4095)

