



Bituminaria basaltica (Fabaceae), a new species from Italy

PIETRO MINISSALE^{1,2}, CRISTIAN BRULLO¹, SALVATORE BRULLO¹, GIANPIETRO GIUSSO DEL GALDO¹ & SAVERIO SCIANDRELLO¹

¹Dipartimento di Scienze Biologiche, Geologiche e Ambientali, Università di Catania, Via A. Longo 19, I 95125 Catania, Italy

²Corresponding author, e-mail: p.minissale@unict.it

Abstract

Bituminaria basaltica is described and illustrated from Filicudi, an islet of the Aeolian Archipelago (Sicily, Italy). This new species, belonging to a small genus of Fabaceae occurring in the Mediterranean region and the Canary Islands, is morphologically distinct from the other taxa in the following features: leaf shape and size, inflorescence size, petal colour, size and shape of flowers, pods and seeds. Its relationships with the known species of *Bituminaria* are examined and a key to the genus is provided.

Key words: Aeolian Archipelago, endemic flora, fodder grass, Mediterranean Basin, taxonomy

Introduction

Bituminaria Heist. ex Fabricius (1759: 165) is a small genus of Fabaceae occurring in the Mediterranean (including Black Sea territories) and Canary Islands, currently including four species (Stirton 1981a, 1981b, Boulos 1999, Greuter *et al.* 1989). *Bituminaria* was restored by Stirton (1981a), to which he ascribed only two species, previously included in *Psoralea* Linnaeus (1753: 762), *P. bituminosa* Linnaeus (1753: 763) [= *Bituminaria bituminosa* (L.) Stirton (1981a: 318)] and *P. acaulis* Steven ex Bieberstein (1808: 206) [= *Bituminaria acaulis* (Steven ex M.Bieb.) Stirton (1981a: 318)]. Afterwards, Greuter (1986) added two more species of *Psoralea*, *P. flaccida* Nábělek (1923: 74) and *P. morisiana* Pignatti & Metlesics (1976: 53) to *Bituminaria*. *Bituminaria bituminosa* shows a certain variability mainly in the shape and size of leaves, flowers, pods, as well as the habit and corolla colour (Zohary 1972, Méndez *et al.* 1991, Jahn & Schönfelder 1995). Such morphological features, that are rather variable within the same population, led to the description of several taxa all referring to this species, e.g. *Psoralea palaestina* Gouan (1773: 51), *P. plumosa* Reichenbach (1832: 869), *P. pontica* Khokhrjakov (1997: 52), *P. bituminosa* subsp. *pontica* (A.P. Khokhr.) Zernov (2000: 70), *P. bituminosa* var. *brachycarpa* Feldmann in Zohary (1972: 455), *P. bituminosa* var. *hulensis* Feldmann in Zohary (1972: 455) and *P. bituminosa* var. *prostrata* Zohary, (1972: 455), *Bituminaria bituminosa* var. *palaestina* (Gouan) R.L. Jahn in Jahn & Schönfelder (1995: 28), *B. bituminosa* var. *albomarginata* Méndez *et al.* (1991: 160) and *B. bituminosa* var. *crassiuscula* Méndez *et al.* (1991: 162). In particular, those varieties described by Zohary (1972) and Méndez *et al.* (1991) seem to be taxonomically valid, and therefore they could be considered as subspecies of *B. bituminosa*. However, a proper taxonomic treatment at infra-specific level of this species will require an in-depth analyses in order to verify whether the diacritical characters used for the differentiation of the aforesaid taxa are an expression of the phenotype or are genetically fixed.

During a field trip in the Aeolian Islands, an archipelago of seven volcanic islets off Milazzo (north-eastern Sicily), a peculiar plant, whose pods clearly denoted its attribution to the genus *Bituminaria*, was found at Filicudi. This plant occurs quite frequently in this island, which is the fifth-largest one of the

archipelago. It grows in dry grasslands dominated by *Hyparrhenia hirta* (L.) Stapf, as well as on secondary stands, such as abandoned fields and roadsides. It is morphologically well-differentiated from the other known species in having smaller cauline leaves with linear leaflets, smaller flowers (11–13 mm) with white corolla petals and smaller pods (9–10 mm).

Based on taxonomic surveys, the taxon closely related to *B. bituminosa* is here described as a new species.

Material and Methods

Morphological analyses were carried out on living plants (20 specimens) coming from the locus classicus of *B. basaltica*, while *B. bituminosa* was surveyed both on living (50 specimens) and dried material (30 specimens) from several Sicilian localities, *B. morisiana* from herbarium specimens (20) from Sardinia, and *B. flaccida* and *B. acaulis* both from literature and herbarium specimens (see additional specimens examined). Seed testa micro-morphology was studied on mature and dried seeds (about 10 for each species) using a scanning electron microscope (SEM) Zeiss EVO LS10, according to the protocol reported by Stork et al. (1980), while terminology of the seed coat sculpturing follows Bartholot (1981) and Gontcharova et al. (2009).

Taxonomic treatment

Bituminaria basaltica Miniss., C. Brullo, Brullo, Giusso & Sciandr., *sp. nov.* (Figs. 1, 2A, 3)

Species Bituminaria bituminosa similis sed foliis brevioribus, linearibus, floribus minoribus, corolla candida, calicem subaequanti vel leviter longiore, stigmatibus papillato, leguminibus et seminibus brevioribus differt.

Types:—ITALY. Sicily: Filicudi a Pecorini a Mare, praterie steppiche su substrati vulcanici, 38°33'36.28"N, 14°33'58.81"E, 46 m, 15 May 2012, *P. Minissale s.n.* (holotype CAT!, isotypes CAT!, FI!).

Habit erect or ascending perennial, with numerous rigid and striate woody stems, up to 60 cm tall, green, appressed-hirsute, no smelling of pitch. Basal leaf stipules lanceolate-ensiform, adnate to the petiole, 4–6 mm long. Basal leaves long petiolate, 50–100 mm long; leaves digitately 3-foliolate, the central leaflet longer and petiolate, the lateral leaflets shorter and subsessile; leaflets rounded-elliptical to linear-lanceolate, hirsute abaxially and glabrous or subglabrous adaxially, the terminal one 11–40 x 7–15 mm, and petiole 4–12 mm long. the lateral ones 8–38 mm x 5–12 mm and petiole 1–2 mm long. Stipules of cauline 3–5 mm long; cauline leaves smaller than basal ones; petiole 40–50 mm long; leaflets linear, the terminal one 35–55 x 2–6 mm and petiole 6–8 mm long, the lateral ones 25–45 mm x 2–5 mm and petiole 1–2 mm long. Raceme subcapitate, 10–16 mm long, 6–12(–16)-flowered; bracts, upper part of peduncles and calyces, covered with white and black hairs; peduncles 100–160 mm long, longer than the leaf. Bracts 6–8 mm long, 1–3-toothed. Calyx 10–13 mm long, 10-nerved with unequal triangular-subulate teeth; tube 4–5 mm long; lower tooth 6–9 mm long; lateral teeth 4–6 mm long. Corolla 11–13 mm long, subequal to slightly longer than the calyx, purely white; standard spatulate, rounded to obtuse at the apex, 11–13 x 5–6 mm, claw slightly tinged with pale lilac; wings 10–11 mm long, with limb 2.5–3.0 mm wide; keel 7.5–8.5 mm long, with limb 1.5–1.8 mm wide, having a dark violet spot above. Staminal tube 7–8 mm long; anthers 0.5–0.6 mm long. Pistil 6–7 mm long, hairy on the ovary and lower part of the style; stigma with numerous papillae. Pod indehiscent, included in the calyx, 9–10 mm long (beak included), with corpus densely covered by setaceous hairs, 0.5–2.0 mm long, mixed to some rigid black prickles; beak flat, falcate, 5.5–6 mm long, glabrous, ciliate only at the margin. Seed adherent to pericarp, laterally compressed, subreniform, 3.5–4 x 2–2.2 mm, blackish-brown.

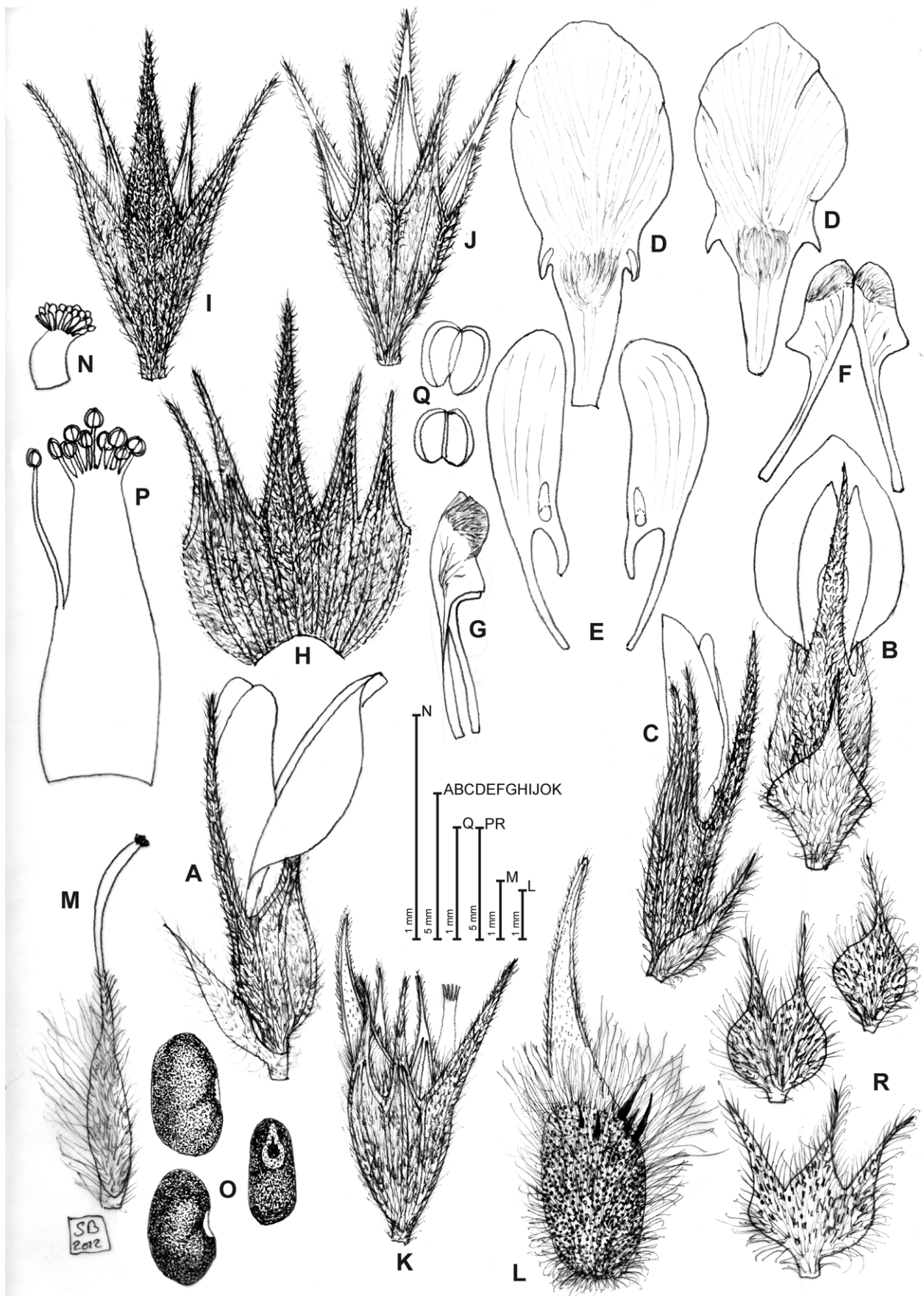


FIGURE 1. Diagnostic features of *Bituminaria basaltica*. **A.** Flower (lateral view). **B.** Flower (ventral view). **C.** Bud. **D.** Standards. **E.** Wings. **F.** Keel (open). **G.** Keel (lateral view). **H.** Calyx (open). **I.** Calyx (ventral view). **J.** Calyx (dorsal view). **K.** Calyx and immature pod. **L.** Calyx and mature pod. **M.** Pistil. **N.** Stigma. **O.** Seeds. **P.** Staminal tube. **Q.** Anthers. **R.** Bracts. Illustration by Salvatore Brullo based on *Minissale s.n.* (CAT).

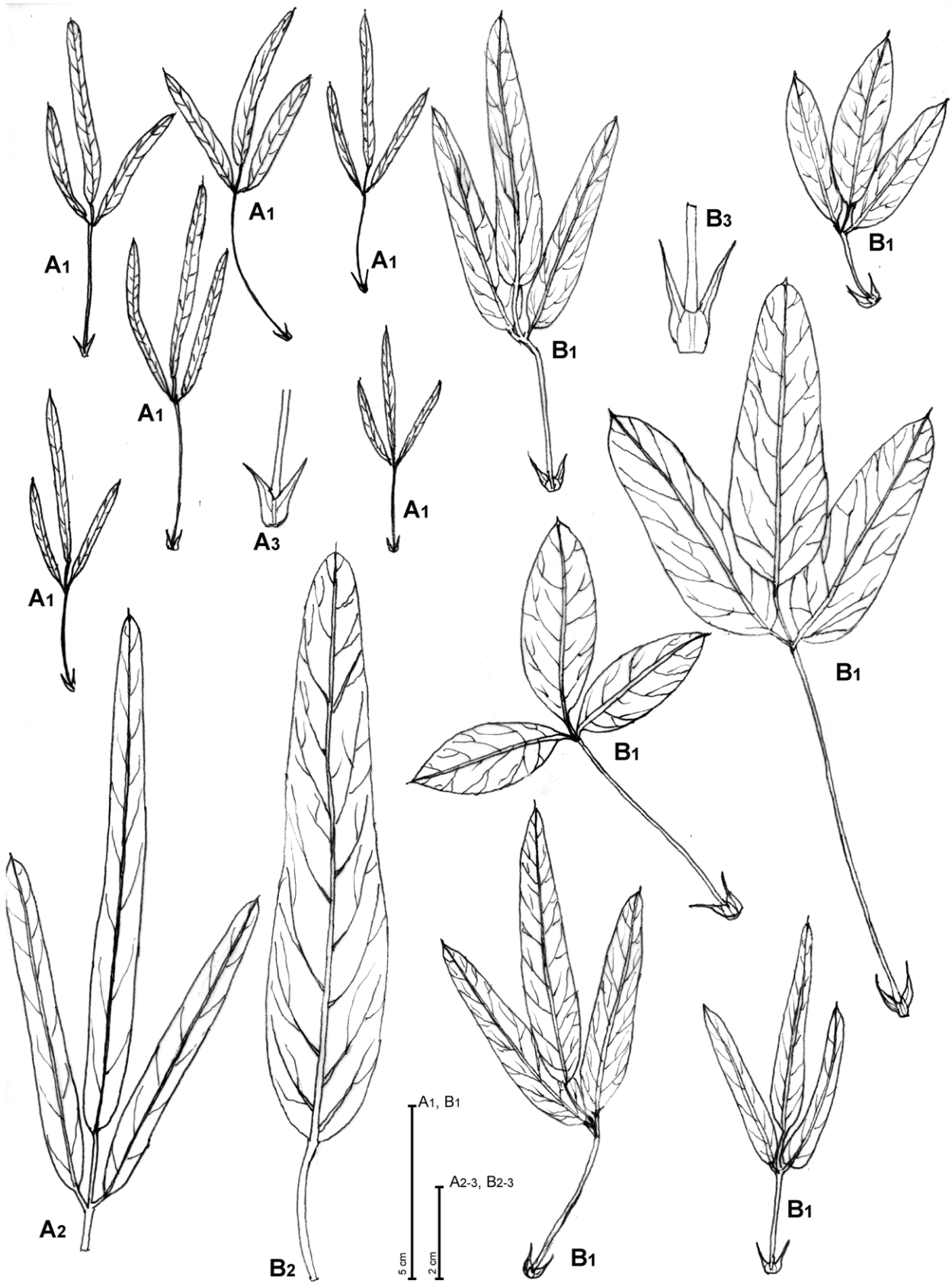


FIGURE 2. Variability in leaf and stipule shape of *Bituminaria basaltica* (A1–3) and *B. bituminosa* (B1–3). Illustration by Salvatore Brullo based on *Minissale s.n.* (CAT) for A and “Catania” Brullo *s.n.* (CAT) for B.



HERBARIUM UNIVERSITATIS CATANENSIS

Provincia SICILIA

Nome *Bituminaria basaltica* sp. nov.

Località Isole Eolie, Filicudi a Pecorini a Mare, praterie
steppiche su substrati vulcanici, 38°33'36.28"N,
14°33'58.81"E, 46 m

Coll. P. Minissale

Data 15.05.2012 Det. _____

FIGURE 3. Holotype of *Bituminaria basaltica* (CAT).

Seed and pod micro-morphology:—As suggested by literature, the exomorphic features of seed testa, based on scanning electron microscopy (SEM), can be used as an additional character for the identification of a given taxon (Barthlott 1981, Koul *et al.* 2000, Fitsch *et al.* 2006, Kasem *et al.* 2011, Celep *et al.* 2012). Several studies on the seed coat micro-morphology of the legume taxa were performed by various authors (Murthy and Sanjappa 2002, Kirkbride *et al.* 2003, Salimpour *et al.* 2007, Al-Ghamdi *et al.* 2010, Bacchetta & Brullo 2010, Fawzel 2011, Gandhi *et al.* 2011, Brullo *et al.* 2011a, Brullo *et al.* 2013), who used several characters to resolve systematic problems. In fact, seed sculptures are usually considered as a conservative and stable character, having relevant taxonomical and phylogenetic implications.

The seed coat of *B. basaltica* shows a fine and undulate reticulum bounding the single cells, which are irregularly polygonal and 2–5 µm wide. The anticlinal walls are raised, with minutely rugose-undulate tops, while the periclinal walls are flat with epidermis finely reticulate-rugose (Fig. 4, A1–2). In order to elucidate the relationships with the allied *B. bituminosa*, its seed testa was also examined. Actually, the seeds of *B. bituminosa* are well differentiated from the new species in having, apart from the size (give the measurements), coat with a reticulum always more or less irregular, with bigger cells, 5–9 µm wide, bounding by straight to curved furrows. The anticlinal walls are incised-depressed, while the periclinal walls are weakly convex, with epidermis uniformly sulcate by curved and concentric grooves (Fig. 4, B1–2).

Other significant differences can be observed in the pod indumentum. In particular, *B. basaltica* has hairs basally that are 22–27 µm wide and a longitudinal furrow broadly widened at the hair base (Fig. 4, A3), while in *B. bituminosa* hairs are 12–17 µm wide at the base and the longitudinal furrow is uniformly narrowed (Fig. 4, B3).

Habitat:—*Bituminaria basaltica* grows on volcanic soils, at an elevation of 20–100 m. The plant is mainly localized on dry grasslands dominated by *Hyparrhenia hirta*, abandoned fields and roadsides (Fig. 5) where hemichryptophytes are also abundant. From the bioclimatic viewpoint (Rivas-Martinez 2004), Filicudi falls within the Mediterranean Pluviseasonal Oceanic bioclimate, and the growing sites of *B. basaltica* are always south-facing with mean annual precipitations of ca. 500 mm and mean annual temperatures of 18°C (thermomediterranean upper dry bioclimatic belt).

Distribution:—Based on many field investigations carried out in the Aeolian Archipelago, *B. basaltica* seems to be endemic of Filicudi. No other *Bituminaria* species has been recorded from the other islands of this archipelago (Lojacono-Pojero 1878, Ferro & Furnari 1968a, 1968b, 1970, Di Benedetto 1973).

Etymology:—The specific epithet refers to the bedrock of the dwelled sites, which is represented by basaltic rocks.

Phenology:—Flowering April to early June, fruiting June to August.

Conservation status:—According to De Rosa *et al.* (2003), the age of the oldest exposed lavas on Filicudi is about 219 ka. Filicudi with an area of 9.5 km² is the fifth-largest of the seven islets of the Aeolian Archipelago, which is located ca. 45 km off NE Sicily. The highest point is Monte Fossa delle Felci at 774 m of elevation. The long-lasting human exploitation, whose occurrence is dated back to the Neolithic, about 6000 years ago (Bernabò Brea & Cavalier 1991) has heavily altered the natural vegetation. Both husbandry and coppicing led to the almost complete disappearance of woodlands suddenly replaced by crops, shrubby vegetation, dry grasslands, and abandoned fields. Therefore, the current spread of *B. basaltica* on the island has been likely favoured by the human disturbance, being a species rather linked to disturbed and ruderal habitats. Considering that the new species is circumscribed to a small island and that grazing and fires may significantly reduce the number of individuals, it is suggested to add *B. basaltica* to the Italian Red List as Vulnerable (VU). In particular, based on the IUCN criteria (IUCN 2010), we propose to include this species in the following category: VU B2, C.

Taxonomic remarks:—According to Stirton (1981a), two morphologically well-differentiated subgenera can be recognized within the genus *Bituminaria*: subgen. *Bituminaria*, typified by *B. bituminosa*, and subgen. *Christevenia* Barneby ex Stirton (1981a: 318) typified by *B. acaulis*. The first-mentioned subgenus is caulescent plants with entire leaflets, racemes with axillary peduncles, bracts fused in a toothed blade, calyces ebracteolate and pods with some glabrous spinulose processes, while the last-mentioned subgenus includes

acaulescent plants with denticulate leaflets, racemes with scapiform peduncles, two bracts filiform separate to the base calyces provided at the base of a linear bracteole on each side and pods with soft pubescent processes. The morphological features of *B. basaltica* suggest to include it into the subgen. *Bituminaria*, together with *B. bituminosa*, *B. morisiana* (Pignatti & Metlesics) Greuter (1986: 108) and *B. flaccida* (Náb.) Greuter (1986: 108). Morphologically, *B. basaltica* differs from the other species of this subgenus for shape of cauline leaves, size of of raceme, flower pieces, corolla colour, pods and seeds (see Table 1).

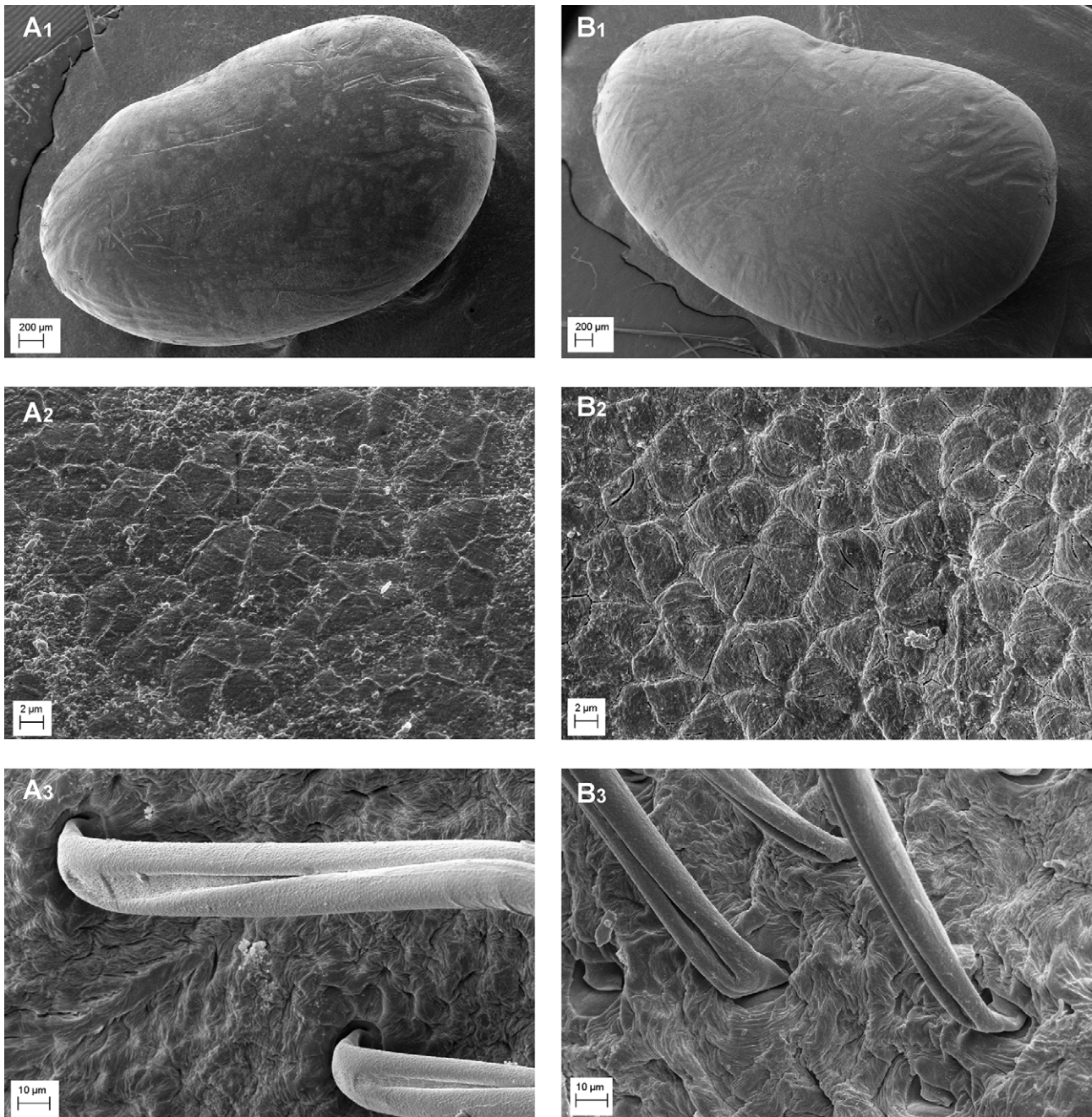


FIGURE 4. SEM micrographs of the seed coats of *Bituminaria basaltica* (**A1–2**) and *B. bituminosa* (**B1–2**) at low magnification (**A1** x 20 and **B1** x 28) and at high magnification (**A2** and **B2** x 2500) and hairs on the pods of *B. basaltica* (**A3**) and *B. bituminosa* (**B3**) at medium magnification (x 700), from material of Filicudi, *Minissale s.n.* (CAT) and Catania *Brullo s.n.* (CAT).



FIGURE 5. Phenological features of *Bituminaria basaltica*. **A.** Natural stands with *Hyparrhenia hirta* dry grassland habitat (Filicudi). **B.** Inflorescence. **C.** Terminal branches with leaves and inflorescences. **D.** Synanthropic stands abandoned fields (Filicudi). **E.** Fructified inflorescence. (Photos by P. Minissale).

TABLE 1. Main diacritic characters of the species of *Bituminaria*.

	<i>B. basaltica</i>	<i>B. bituminosa</i>	<i>B. morisiana</i>	<i>B. flaccida</i>	<i>B. acaulis</i>
Life form	hemiptophyte	hemiptophyte	chamaephyte	chamaephyte	hemiptophyte
Ecology	terricolous	terricolous	chasmophyte	chasmophyte	terricolous
Stem habit	erect to ascending-erect	erect, rar. prostrate	erect-ascending	ascending to procumbens	acaule
Stem tool (cm)	up to 60	up to 150	up to 60	up to 40	up to 40
Stipule length (mm)	3–6	4–15	8–11	2–7	15–30
Leaf indumentum abaxial face	hirsute	hirsute	sparsely hairy	hirsute	hirsute
Leaf indumentum adaxial face	glabrous or subglabrous	hirsute	glabrous to subglabrous	hirsute	hirsute
Basal leaf petiole length (cm)	5–10	1.5–13	4–20	2–6.5	6–20
Basal leaflet shape	rounded-elliptical to linear-lanceolate	rounded-elliptical to lanceolate	ovate-lanceolate to elliptical	suborbicular to obovate	ovate to ovate-oblongate
Basal leaflet margin	entire	entire	entire	entire	denticulate
Basal leaflet length (mm)	8–40	3–90	27–42	4–15	30–70
Basal leaflet width (mm)	7–15	10–30	15–20	3–10	20–50
Cauline leaf petiole length (cm)	4–5	1.5–15	1.5–8	1–6	absent
Cauline leaflet shape (mm)	linear	elliptical to lanceolate	ovate-lanceolate to lanceolate	obovate to linear-lanceolate	absent
Cauline leaflet length (mm)	30–55	30–60	28–38	8–20	absent
Cauline leaflet width (mm)	2–6	6–22	6–18	2–12	absent
Peduncle raceme length (cm)	10–16	8–22	4–12	2–9	18–25
Raceme shape	capitate	capitate	capitate to ovoid	capitate	ovoid to ellipsoid
Raceme length (cm)	1–1.6	2–2.8	2.5–4.5	1.7–2	3–6
Raceme number flower	6–12 (16)	15–30	10–25	5–8	20–50
Bract shape	single, laminar, toothed	single, laminar, toothed	single, laminar, toothed	single, laminar, toothed	two, filiform
Bract length (mm)	6–8	6–15	6–9	3–5	15–22
Calyx bracteoles	absent	absent	absent	absent	present
Calyx length (mm)	10–13	14–18	15–18	9–11	15–18
Calyx tube length (mm)	4–5	6–7	5–7	5–6	7–8
Calyx lower tooth length (mm)	6–9	7–12	7–10	5–6	7–10
Calyx lateral teeth length (mm)	4–6	7–9	6–8	4–5	6–8
Corolla colour	pure white	blue-violet	white-violet	pink	creamy-white
Corolla length (mm)	11–13	15–20	18–23	16–18	15–20
Corolla/calyx ratio	subequalling	longer	longer	longer	longer
Standard shape	spathulate	ovate-elliptic	ovate-lanceolate	ovate-elliptic	obovate-spathulate
Standard apex	rounded to obtuse	emarginated	obtuse	obtuse	obtuse
Standard length (mm)	11–13	15–20	18–23	16–18	15–20
Standard width (mm)	5–6	5–8	6–8	5–6	–
Wing length (mm)	10–11	14–18	16–18	15–16	14–16
Wing limb width (mm)	2.5–3	2–3	3–4	3.3–5	–
Keel length (mm)	7.5–8.5	10–14	11–14	13–14	12–14
Keel limb width (mm)	1.5–1.8	1.8–2.5	2–2.5	1.8–2	–
Staminal tube (mm)	7–8	10–13.5	9–12	11–12	11–13
Pistil length (mm)	6–7	9–12	9–10	–	–
Pod length incl. beak (mm)	9–10	13–26	18–26	10	20
Pod setaceous hairs length (mm)	0.5–2	0.5–3	0.5–3	–	–
Pod beak length (mm)	5.5–6	9–19	12–19	5	10
Pod beak face indumentum	glabrous	Pubescent	Pubescent	pubescent	hirsute
Seed length (mm)	3.5–4	5–7	5–7	5	10
Seed width (mm)	2–2.2	3–4	3–4	–	–

– : unchecked character

Bituminaria basaltica shows some relationship with *B. bituminosa* in the habit and ecological characters but it is well differentiated in several characters chiefly regarding size and shape of the leaves, inflorescences, flowers, pods, seeds and corolla colour. In fact, *B. bituminosa* has elliptic to lanceolate cauline leaflets, 6–22 mm wide, racemes 2–2.8 cm long, with 15–30 flowers, calyx 14–18 mm long, with teeth 7–12 mm long, corolla blue-violet, 15–20 mm long, longer than calyx, with apex emarginate, staminal tube 10–20 mm long, pistil 9–12 mm long, pods (beak included) 13–26 mm long, beak pubescent in the face, seeds 5–7 mm long (Fig. 6). Moreover, *B. basaltica* is similar to *B. flaccida*, by having very short pods (max. 10 mm), which occurs in Israel, Jordan and Sinai, but several morphological features and ecological requirements allows distinguishing the two species. Actually, *B. flaccida* is a typical chasmophyte, having leaflets completely hirsute, the basal ones suborbicular to obovate, 4–15 mm long, the cauline ones obovate to linear-lanceolate 8–20 mm long, racemes 17–20 mm long, 5–8-flowered, with peduncles 2–9 mm long, calyx 9–11 mm long, corolla pink, 16–18 mm long, longer than calyx, staminal tube 11–12 mm long, and pod beak 5 mm long, completely Pubescent. Lastly, even *B. morisiana* is markedly different from *B. basaltica*, mainly for the chamaephytic habit, wider leaves, bigger and many-flowered racemes, bigger floral pieces, corolla white-violet, pods (beak included) 18–26 mm long, and seeds 5–6 mm long.

Based on the current knowledge, *B. basaltica* seems to be circumscribed to Filicudi, where it is morphologically stable, showing no variability in the wild.

It is worthy to mention that the Aeolian Archipelago hosts several narrow endemics or rare species, such as *Cytisus aeolicus* Gussone (1834: 221), *Silene hicesiae* Brullo & Signorello (1984: 141), *Centaurea aeolica* Gussone ex Candolle (1838: 584), *Genista tyrrhena* Valsecchi (1986:145), *Erysimum brulloi* Ferro (2009: 298), *Eokochia saxicola* (Gussone 1855: 275) Freitag & G. Kadereit in Kadereit & Freitag (2011: 72), *Dianthus rupicola* Biv. subsp. *aeolicus* (Lojacono-Pojero 1888: 163) Brullo & Minissale (2002: 539), and *Limonium minutiflorum* (Guss.) Kuntze (1891: 395). Therefore, it is possible to consider this archipelago as a micro-hotspot, characterized by very active speciation processes, which is likely a consequence of manifold constraining factors, such as harsh environmental conditions, geological history, and geographical isolation. As in the case of *Eokochia saxicola*, *Cytisus aeolicus* and *Silene hicesiae*, the Aeolian Archipelago probably acted as a refuge area for otherwise extinct species (Brullo & Signorello 1984, Conte *et al.* 1998, Cristofolini & Conte 2002, Kadereit & Freitag 2011, Santangelo *et al.* 2012). The last recorded endemics confirm the peculiarity of the Mediterranean flora, not only for the high rate of narrow endemics particularly on islands or wherever mountains exceed 1500 m in altitude (cf. Pignatti *et al.* 1980, Greuter 1991, Médail & Quézel 1997, Thompson 2005, Guarino *et al.* 2005, Brullo *et al.* 2001, 2005, Brullo *et al.* 2011b) but also for the peculiar distribution patterns that make the Mediterranean island biogeography so interesting and intriguing (Troia *et al.* 2012).

Finally, *B. basaltica* could also be an interesting species to study for its potential use as a pasture grass and forage plant, similarly to *B. bituminosa* which has increased in agronomical appeal during the last decade (Méndez & Fernández 1990, Gutman *et al.* 2000, Sternberg *et al.* 2006, Walker *et al.* 2006, Real *et al.* 2009, Ventura *et al.* 2004, Gulumser *et al.* 2010, Finlayson *et al.* 2012). The use of *B. bituminosa* as forage species is well known in the Canary Islands for a long time (Méndez 2000), where it is not cultivated but spontaneously grazed by livestock or, more frequently, collected and offered to the livestock as hay, thus removing its typical smell of bitumen which causes the refusal by animals when it is still green. In particular, *B. bituminosa* var. *albomarginata*, which occurs exclusively in Lanzarote (Canary Islands), was introduced to Australia in 2005 (Finlayson *et al.* 2012), in order to experimentally evaluate it for potential release as a commercial forage crop. Its extreme drought tolerance, lower invasiveness together with its ability to produce relatively high quality feed throughout the year, is extremely interesting (Ventura *et al.* 2009). Therefore, the potential use of *B. basaltica* as pasture grass or fodder should be worthy to be tested. In particular, its weak bitumen smell would suggest this legume as fairly good for grazing, and not being a strong colonizer, the risks of becoming a weed are rather low. This potential plant for animal husbandry confirms once more the importance and usefulness of any survey focused on biodiversity, even in areas very explored as the Mediterranean islands.

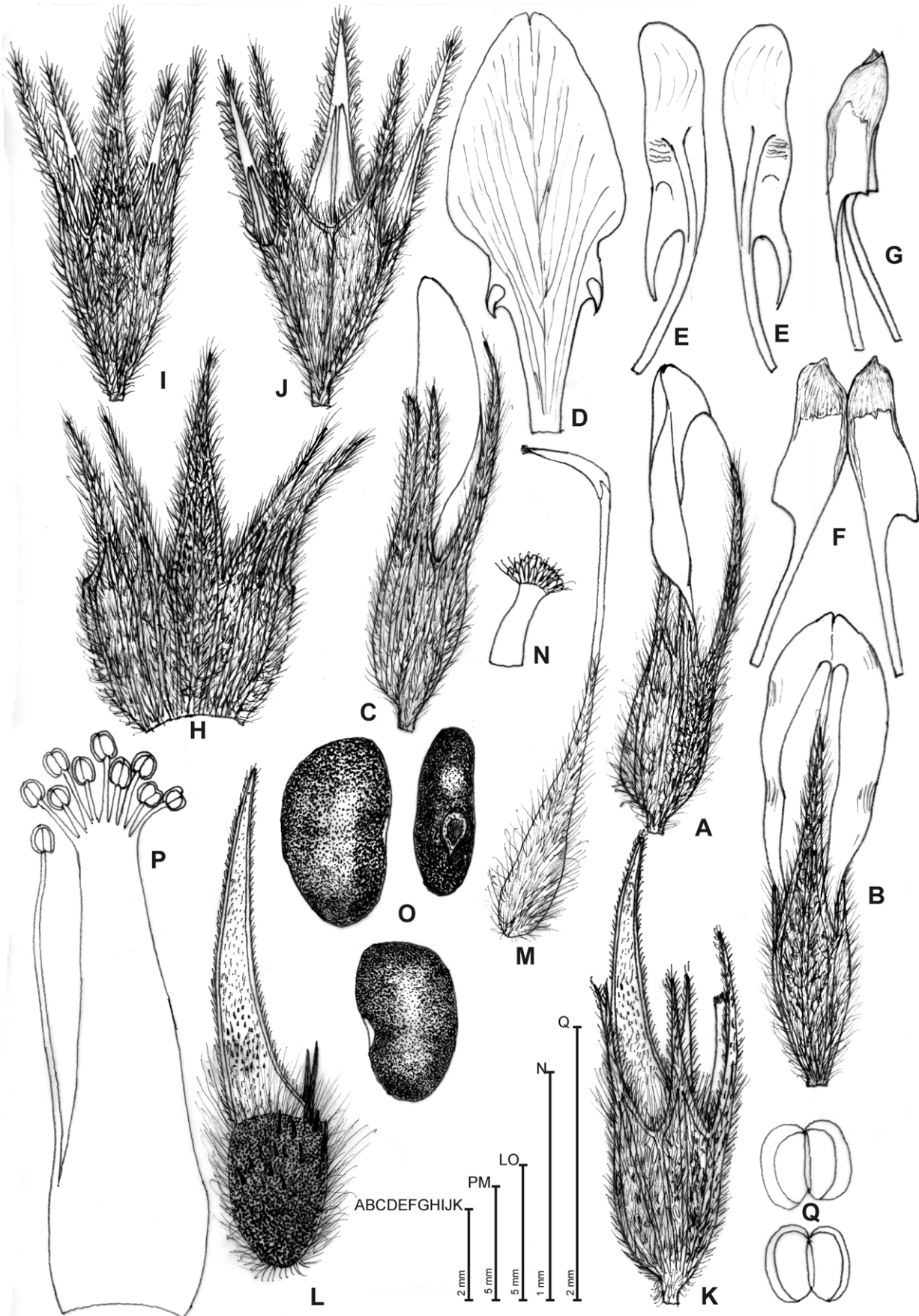


FIGURE 6. Diagnostic features of *Bituminaria bituminosa*. **A.** Flower (lateral view). **B.** Flower (ventral view). **C.** Bud. **D.** Standard. **E.** Wings. **F.** Keel (open). **G.** Keel (lateral view). **H.** Calyx (open). **I.** Calyx (ventral view). **J.** Calyx (dorsal view). **K.** Fruiting calyx and pod. **L.** Pod. **M.** Pistil. **N.** Stigma. **O.** Seeds. **P.** Staminal tube. **Q.** Anthers. **R.** Illustration by Salvatore Brullo based on specimens from Catania, *Brullo s.n.* (CAT).

Key to the species of *Bituminaria*

1. Plants acaulescent; leaflets sessile, denticulate; racemes ovoid to ellipsoid *B. acaulis*
- Plants caulescent; leaflets petiolate, entire; racemes capitate 2
2. Cauline leaflets linear; corolla purely white; flowers 11–13 mm long *B. basaltica*
- Cauline leaflets wider (not linear); corolla pink to blue-violet or white-violet; flowers 15–20 mm long 3
3. Racemes 5–8 flowered; calyx 9–11 mm long; corolla pink; pods 10 mm long (including persistent beak) *B. flaccida*
- Racemes 10–30 flowered; calyx 14–18 mm long; corolla white-violet to blue-violet; pods, pod 13–26 mm long (including persistent beak) 4
4. Plants woody at the base; leaflets glabrous or subglabrous adaxially; racemes 3–4.5 mm long *B. morisiana*
- Plants entirely herbaceous; leaflets hirsute; racemes 2.0–2.8 mm long *B. bituminosa*

Additional specimens examined (paratypes):—ITALY. Sicily: Filicudi a Monte Guardia, praterie steppiche su substrati vulcanici, 38°33'30.47"N, 14°34'36.92"E, 61 m, 29 June 2012, *P. Minissale s.n.* (CAT!); Filicudi a Pecorini a Mare, praterie steppiche su substrati vulcanici, 38°33'36.28"N, 14°33'58.81"E, 46 m, 29 June 2012, *P. Minissale s.n.* (CAT!).

Additional specimens examined (related taxa):

B. acaulis:

TURKEY. Rize: Talus en lisière de sous-bois d'*Abies nordmanniana*, Oviedagi Gocidi, bord de la route 925, 6 kilometres sud Rize, Turquie, 1434 m, 07 July 2007, *P. Rabaute 9431* (Herbier Philippe Rabaute).

B. bituminosa:

ITALY. Sicily: Madonie, 25 April 2001, *S. Brullo & S. Sciandrello s.n.* (CAT); Agira (Enna), 09 June 1993, *S. Brullo & P. Minissale s.n.* (CAT); Monte Palmeto, 23 April 1971, *S. Brullo s.n.* (CAT); Rosella, Pozzallo, 04 May 1969, *S. Brullo s.n.* (CAT); Monte Cofano, Trapani, May 1975, *S. Brullo s.n.* (CAT); Marsala, 14 April 1985, *S. Brullo s.n.* (CAT); Catania, Tondo Gioeni, 25 May 2012, *S. Brullo s.n.* (CAT).

B. flaccida:

ISRAEL. Negev: Edom, 10 October 1988, *O. Fragman s.n.* (Ori Fragman's Herbarium-Jerusalem); Edom, 21 April 1989, *O. Fragman s.n.* (Ori Fragman's Herbarium-Jerusalem).

B. morisiana:

ITALY. Sardinia: S'Enna e Sa Craba, Conca D'Oru, Capoterra (CA), graniti, metaquarziti, 500–655 m, 10 June 1998, *G. Bacchetta & S. Brullo s.n.* (CAT); Monte Taddì (vulcaniti), 9 June 2001, *G. Bacchetta, S. Brullo, M. Casti & G. Giusso s.n.* (CAT); Rio di Monti Nieddu (CA), 13 June 1998, *G. Bacchetta & S. Brullo s.n.* (CAT); San Nicola, Buggerru (CA), 11 June 1998; *G. Bacchetta & S. Brullo s.n.* (CAT).

Acknowledgements

The authors are very grateful to Dr. Girolamo Fichera from the University of Catania for his useful collaboration and technical assistance for the seed coat analyses. Many thanks are also due to Dr. Ori Fragman-Sapir from the Jerusalem Botanical Gardens (Israel) for his kind and useful collaboration in checking the Herbarium material.

References

- Al-Ghamdi, F.A. & Al-Zahrani, R.M. (2010) Seed morphology of some species of *Tephrosia* Pers. (Fabaceae) from Saudi Arabia. Identification of species and systematic significance. *Feddes Repertorium* 121: 59–65.
<http://dx.doi.org/10.1002/fedr.201011128>
- Bacchetta, G. & Brullo, S. (2010) *Astragalus tegulensis* Bacch. & Brullo (Fabaceae), a new species from Sardinia. *Candollea* 65: 5–14.
- Barthlott, W. (1981) Epidermal and seed surface character of plants: Systematic applicability and some evolutionary aspects. *Nordic Journal of Botany* 1: 345–355.
<http://dx.doi.org/10.1111/j.1756-1051.1981.tb00704.x>
- Bernabò Brea, L. & Cavalier, M. (1991) *Melignis Lipàra. VI. Filicudi. Insediamenti dell'età del bronzo*. Accademia di Scienze, Lettere ed Arti di Palermo, Palermo, 354 pp.
- Bieberstein, M. (1808) *Flora Taurico-Caucasica exhibens stirpis phaenerogamas, in Chersoneso Taurica et Regionibus Caucasicae sponte nascentes* 2. Typis Academicis, Charkoviae, 477 pp.
- Boulos, L. (1999) *Flora of Egypt* 1. Al Hadara Publishing, Cairo, 412 pp.
- Brullo, C., Brullo, S., Giusso del Galdo, G., Minissale, P. & Sciandrello, S. (2011a) *Astragalus raphaelis* (Fabaceae), a critical species from Sicily and taxonomic remarks on *A. sect. Sesamei*. *Nordic Journal of Botany* 29: 518–533.
- Brullo, C., Brullo, S., Giusso del Galdo, G., Minissale, P. & Sciandrello, S. (2013) *Astragalus kamarinensis* (Fabaceae), a new species from Sicily. *Annales Botanici Fennici* 50: 61–67.
- Brullo, C., Minissale, P., Sciandrello, S. & Spampinato, G. (2011b) Phytogeographic survey on the endemic vascular flora of the Hyblaean territory (SE Sicily, Italy). *Acta Botanica Gallica*, 158: 617–631.
- Brullo, S., Giusso del Galdo, G. & Guarino, R. (2001) The orophilous communities of Pino-Juniperetea class in Central and Eastern Mediterranean area. *Feddes Repertorium* 112: 261–308.
- Brullo, S. & Minissale, P. (2002) Il gruppo di *Dianthus rupicola* Biv. nel Mediterraneo centrale. *Informatore Botanico Italiano* 33: 537–542.
- Brullo, S. & Signorello, P. (1984) *Silene hicesiae*, a new species from the Aeolian Islands. *Willdenowia* 14: 141–144.
- Candolle de, A.P. (1838) *Prodromus Systematis Naturalis Regni Vegetabilis* 6. Treuttel & Würtz, Parisiis, 687 pp.
- Celep, F., Koyuncu, M., Fritsch, R.M., Kahraman, A. & Doğan, M. (2012) Taxonomic importance of Seed Morphology in *Allium* (Amaryllidaceae). *Systematic Botany* 37: 893–912.
- Conte, L., Troia A. & Cristofolini, G. (1998) Genetic diversity in *Cytisus aeolicus* Guss. (Leguminosae), a rare endemite of the Italian flora. *Plant Biosystems* 132: 239–249
- Cristofolini, G. & Conte, L. (2002) Phylogenetic patterns and endemism genesis in *Cytisus* Desf. (Leguminosae-Cytiseae) and related genera. *Israel Journal of Plant Sciences* 50 Supplement: 37–50.
- De Rosa, R., Guillou, H., Mazzuoli, R. & Ventura, G. (2003) New unspiked K-Ar ages of volcanic rocks of the central and western sector of the Aeolian Islands: Reconstruction of the volcanic stages. *Journal of Volcanology and Geothermal Research* 120: 161–178.
- Di Benedetto, L. (1973) Flora di Alicudi (Isole Eolie). *Archivio Botanico e Biogeografico Italiano* 49: 1–28.
- Fabricius, P.C. (1759) *Enumeratio methodica plantarum horti medici Helmstadiensis*. Ioannis Drimbornius, Helmstadii, 165 pp.
- Fawzel, N.M. (2011) Macro- and micromorphological seed characteristics of some selected species of Caesalpinoideae-Leguminosae. *Research Journal of Botany* 6: 68–77.
- Ferro, G. (2009) *Erysimum brulloi* (Brassicaceae), a new species from the Aeolian Archipelago (Sicily). *Flora Mediterranea* 19: 297–302.
- Ferro, G. & Furnari, F. (1968a) Flora e vegetazione di Stromboli (Isole Eolie). *Archivio Botanico e Biogeografico Italiano* 44: 21–45.
- Ferro, G. & Furnari, F. (1968b) Flora e vegetazione di Stromboli (Isole Eolie). *Archivio Botanico e Biogeografico Italiano* 44: 59–85.
- Ferro, G. & Furnari F. (1970) *Flora e vegetazione di Vulcano (Isole Eolie)*. La Nuova Grafica C. Napoli, Caltagirone, 66 pp.
- Finlayson, J., Reala, D., Nordbloma, T., Revella, C., Ewinga, M. & Kingwellb, R. (2012) Farm level assessment of a novel drought tolerant forage: Tederia (*Bituminaria bituminosa* C.H. Stirt. var. *albomarginata*). *Agricultural Systems* 112: 38–47.
<http://dx.doi.org/10.1016/j.agsy.2012.06.001>
- Fitsch, R.M., Kruse, J., Adler, K. & Rutten, T. (2006) Testa sculptures in *Allium* L. subgen. *Melanocrommyum* (Webb & Berth.) Rouy (Alliaceae). *Feddes Repertorium* 117: 250–263.
<http://dx.doi.org/10.1002/fedr.200611094>
- Gandhi, D., Albert, S. & Pandya N. (2011) Morphological and micromorphological characterization of some legume seeds from Gujarat, India. *Environmental and Experimental Biology* 9:105–133.
- Gontcharova, S.B., Gontcharov, A.A., Yakubov, V.V. & Kondo, K. (2009) Seed surface morphology in some

- representatives of the genus *Rhodiola* sect. *Rhodiola* (Crassulaceae) in the Russian Far East. *Flora* 204: 17–24.
- Gouan, A. (1773) *Illustrationes et Observationes Botanicae*. Orell, Gessner, Fuesslin & Socios, Tiguri, 82 pp.
- Greuter, W. (1986) *Bituminaria*. In: Greuter, W. & Raus, T. (ed.) Med-Checklist Notulae 13. *Willdenowia* 16: 103–116.
- Greuter, W. (1991) Botanical diversity, endemism, rarity, and extinction in the Mediterranean area: an analysis based on the published volumes of Med-Checklist. *Botanika Chronika* 10: 63–79.
- Greuter, W., Burdet, H.M. & Long, G. (1989) *Med-Checklist. Dicotyledones (Lauraceae-Rhamnaceae)* 4. Atar S.A., Genève, 568 pp.
- Gulumser, E., Basaran, U., Acar, Z., Ayan, I. & Mut, H. (2010) Determination of some agronomic traits of *Bituminaria bituminosa* accessions collected from Middle Black Sea Region. *Option Méditerranéennes, A* 92: 105–108.
- Gussone, G. (1834) *Florae Siculae Prodromus* Supplement 2. Regia Typographia, Neapoli, 72 pp.
- Gussone G. (1855) *Enumeratio plantarum vascularium in Insula Inarime sponte provenientium vel oeconomico usu passim cultarum*. Ex Vanni typographeo, Neapoli, 428 pp.
- Gutman, M., Perevolotsky, A. & Sternberg, M. (2000) Grazing effects on a perennial legume, *Bituminaria bituminosa* (L.) Stirton, in a Mediterranean rangeland. *Cahiers Options Méditerranéennes* 45: 299–303.
- IUCN (2010) *The IUCN red list of threatened species, version 2010.4*. IUCN Red List Unit, Cambridge, U.K. Available from: <http://www.iucnredlist.org/> (accessed: 20 January 2012).
- Jahn, R. & Schönfelder, P. (1995) *Exkursionsflora für Kreta*. Eugen Ulmer GmbH & Co., Stuttgart, 446 pp.
- Kadereit, G. & Freitag, H. (2011) Molecular phylogeny of Camphorosmeae (Camphorosmoideae, Chenopodiaceae): Implications for biogeography, evolution of C4-photosynthesis and taxonomy. *Taxon* 60: 51–78.
- Kasem, W.T., Ghareeb, A. & Marwa, E. (2011) Seed morphology and seed coat sculpturing of 32 taxa of Family Brassicaceae. *Journal of American Science* 7: 166–178.
- Khokhrjakov, A.P. (1997) Some new taxa from Transcaucasus and Turkey. *Byulleten' Glavnogo Botaniceskogo Sada (Moscow & Leningrad)* 175: 49–55.
- Kirkbride, J.H. Jr., Gunn, C.R. & Weitzman, A.L. (2003) Fruits and seeds of genera in the subfamily Faboideae (Fabaceae), vol. 1–2. *Technical Bulletin* 1890: 1–1185.
- Koul, K.K., Nagpal, R. & Raina, S.N. (2000) Seed coat microsculpturing in *Brassica* and allied genera (Subtribe Brassicinae, Raphaninae, Moricandinae). *Annals of Botany* 86: 385–397.
- Kuntze, C. E. O. (1891) *Revisio Generum Plantarum* 2. Universitätsdruckerei von H. Sturtz, Würzburg, 1011 pp.
- Linnaeus, C. (1753) *Species Plantarum* 2. Laurentii Salvii, Stockholm, 640 pp.
- Lojacono-Pojero, M. (1878) *Le isole Eolie e la loro vegetazione con enumerazione delle piante spontanee vascolari*. Stamperia di Giovanni Lorusnaider, Palermo, 140 pp.
- Lojacono-Pojero, M. (1888) *Flora sicula, o Descrizione delle Piante vascolari spontanee o indigenate in Sicilia* 1. Tipografia Virzì, Palermo, 234 pp.
- Médail, F. & Quézel, P. (1997) Hot-spots analysis for conservation of plant biodiversity in the Mediterranean Basin. *Annals of the Missouri Botanical Garden* 84: 112–127. <http://dx.doi.org/10.2307/2399957>
- Méndez, P. (2000) El heno de tederá (*Bituminaria bituminosa*): Un forraje apetecible para el caprino. *3 Reunión Ibérica de Pastos y Forrajes, Galicia (Spain)*: 412–414.
- Méndez, P. & Fernández, M. (1990) Interés forrajero de las variedades de *Bituminaria bituminosa* (L.) Stirton ("tedera") de Canarias. *XXX Reunión Científica de la Sociedad Española para el Estudio de los Pastos, Donostia-San Sebastián (Spain)*: 264–272.
- Méndez, P., Fernández, M. & Santos, A. (1991) Variedades de *Bituminaria bituminosa* (L.) Stirton (Leguminosae) en el archipiélago canario. *Pastos* 20: 157–166.
- Murthy, G.V.S. & Sanjappa, M. (2002) SEM studies on seed morphology of *Indigofera* L. (Fabaceae) and its taxonomic utility. *Rheedea* 12: 21–51.
- Nábělek, F. (1923) *Iter Turcico-Persicum* 1: Plantarum collectarum enumeratio: Ranunculaceae-Dipsacaceae. *Spisy Vydávané Přírodovědeckou Fakultou Masarykovy University* 35: 1–144.
- Pignatti, S. & Metlesics, H. (1976) *Psoralea morisiana* e *Ptychotis sardoa*, due nuove specie di Angiospermae della Sardegna. *Bollettino della Società Sarda di Scienze Naturali* 15: 53–57.
- Pignatti, E., Pignatti, S., Nimis, P.L. & Avanzini, A. (1980) La vegetazione ad arbusti spinosi emisferici: Contributo alla interpretazione delle fasce di vegetazione delle alte montagne dell'Italia mediterranea. *Consiglio Nazionale delle Ricerche Roma* AQ/1/79: 1–130.
- Real, D., Correal, E., Mendez, P., Santos, A., Rios, S., Sternberg, Z.M., Dini-Papanastasi, O., Pecetti, L. & Tava, A. (2009) *Bituminaria bituminosa* CH Stirton. In: *Grassland Species Profiles*. FAO, Roma. http://www.fao.org/ag/AGP/AGPC/doc/GBASE/new_species/tederá/bitbit.htm. (Accessed 28 September 2012).
- Reichenbach, H.G.L. (1832) *Flora Germanica Excursoria*. Sectio III. Carolus Cnobloch, Leipzig, 444 pp.
- Salimpour, F., Mostafavi, G. & Sharifnia, F. (2007) Micromorphologic study of the seed of the genus *Trifolium*, section *Lotoidea*, in Iran. *Pakistan Journal of Biological Sciences* 10: 378–382. <http://dx.doi.org/10.3923/pjbs.2007.378.382>

- Santangelo, A., Croce, A., Lo Cascio, P., Pasta, S., Strumia, S. & Troia, A. (2012) *Eokochia saxicola* (Guss.) Freitag et G. Kadereit. *Informatore Botanico Italiano*. 44: 428–431.
- Sternberg, M., Gishi, N. & Mabjeesh, S.J. (2006) Effects of grazing on *Bituminaria bituminosa* (L.) Stirton: A potential forage crop in Mediterranean grasslands. *Journal of Agronomy & Crop Science* 192: 399–407.
<http://dx.doi.org/10.1111/j.1439-037X.2006.00227.x>
- Stirton, C.H. (1981a) Studies in the Leguminosae-Papilionoideae of southern Africa. *Bothalia* 13: 317–325.
- Stirton, C.H. (1981b) Tribe 11. Psoraleeae (Benth.) Rydb. In: Polhill, R.M. & P. H. Raven P.H. (eds.) *Advances in legume systematics*, part. 2. Royal Botanic Gardens, Kew, pp. 337–343.
- Stork, A.L., Snogerup, S. & Wuest, J. (1980) Seed characters in *Brassica* section *Brassica* and some related groups. *Candollea* 35: 421–450.
- Thompson, J.D. (2005) *Plant evolution in the Mediterranean*. Oxford University Press, New York, 293 pp.
- Troia, A., Raimondo, F.M. & Mazzola, P. (2012) Mediterranean island biogeography: Analysis of fern species distribution in the system of islets around Sicily. *Plant Biosystems* 146: 576–585.
- Valsecchi, F. (1986) Due nuove specie del genere *Genista* L. nel Mediterraneo. *Bollettino della Società Sarda di Scienze Naturali* 25: 143–147.
- Ventura, M.R., Castanon, J.I.R. & Mendez, P. (2009) Effect of season on teder (*Bituminaria bituminosa*) intake by goats. *Animal Feed Science and Technology* 153: 314–319.
<http://dx.doi.org/10.1016/j.anifeedsci.2009.06.018>
- Ventura, M.R., Castañón, J.I.R., Pieltain, M.C. & Flores, M.P. (2004) Native value of forage shrubs: *Bituminaria bituminosa*, *Rumex lunaria*, *Acacia salicina*, *Cassia sturtii* and *Adenocarpus foliosus*. *Small Ruminant Research* 52: 13–18.
[http://dx.doi.org/10.1016/S0921-4488\(03\)00225-6](http://dx.doi.org/10.1016/S0921-4488(03)00225-6)
- Walker, D.J, Moñino, I. & Correal, E. (2006) Genome size in *Bituminaria bituminosa* (L.) C.H. Stirton (Fabaceae) populations: Separation of “true” differences from environmental effects on DNA determination *Environmental and Experimental Botany* 55: 258–265.
<http://dx.doi.org/10.1016/j.envexpbot.2004.11.005>
- Zernov, A.S. (2000) *Plantae Transcaucasiae boreali-occidentalis*. Moscow State Pedagogical University, Moscow, 129 pp.
- Zohary, M. (1972) *Flora Palaestina* 2. Goldberg’s Press, Jerusalem, 489 pp.