



Clarification of the type specimens of *Angraecum parcum* Schltr. and *Angraecum stolzii* Schltr.

BASTIAN STEUDEL^{1,2}

¹Biodiversity, Macroecology & Conservation Biogeography Group, Faculty of Forest Sciences and Forest Ecology, Georg-August-University of Göttingen, Büsingenweg 2, D-37077 Göttingen.

²Systematic Botany, University of Zurich, Zollikerstrasse 107, CH-8008 Zurich, Switzerland.

Abstract

Confusion about type status of the collections *Stolz 640* and *Stolz 2508*, both described by Schlechter, have arisen because the epithet *stolzii* was used by Schlechter himself on labels of the type collection of *Angraecum parcum* Schltr. I here clarify which are the type collections of *A. parcum* Schltr. and *A. stolzii* Schltr. and designate lectotypes for these species.

Angraecum parcum (Schlechter 1915: 604) was based on the collection *Stolz 640* in the same article in *Botanische Jahrbücher für Systematik, Pflanzengeschichte und Pflanzengeographie* as *Angraecum stolzii* (Schlechter 1915: 603) based on *Stolz 2508*. However, there is a handwritten annotation by Schlechter on specimens of *Stolz 640* at the herbaria in Berlin (B) as well as Zurich (Z+ZT) that this would be “*Angraecum Stolzii* Schltr. sp. nov.” (Fig. 1). The use of the name *A. stolzii* on both *Stolz 640* and *2508* thus creates the potential for confusion about the type status of these collections. Apparently, at some point after annotating the specimens of *Stolz 640* Schlechter decided not to use the “working name” “*Stolzii*” for this collection but named it *Angraecum parcum* Schltr. and selected the collection *Stolz 2508* as the type of *Angraecum stolzii* Schltr. Clearly, the labels of *Stolz 640* have never been “corrected”. Comparison of the type material and descriptions provided by Schlechter (1915) clearly show that the descriptions of these two species match the collections cited in the descriptions, i.e., that *Stolz 2508* is the type material of *A. stolzii* and *Stolz 640* that of *A. parcum*. Both species are correctly described, but no holotypes were designated by Schlechter. Therefore, I here designate lectotypes for the two species as follows.

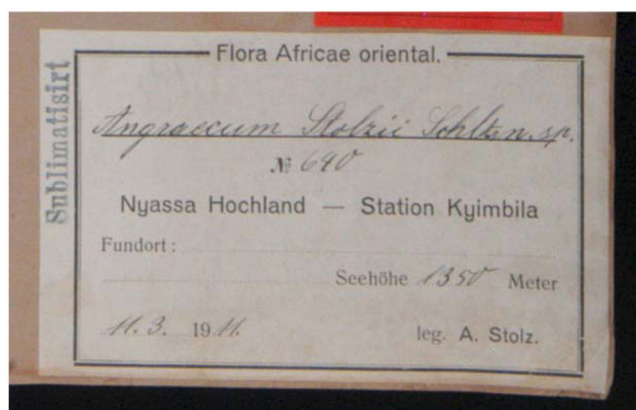


FIGURE 1. Label of the collection *Stolz 640*, the type of *Angraecum parcum* Schltr. with a handwritten annotation “*Angraecum Stolzii* Schltr. n.sp.” (Herbarium Z, Z000062284).